

# Child Welfare Services Outcome and Accountability Quarterly Data Report



July 2011

SANTA CLARA COUNTY



SOCIAL SERVICES AGENCY

Prepared by:

Arcel Vazquez Blume

Izi Chan

Evaluation and Planning

Development and Operational Planning

Santa Clara County Social Services Agency

Contact:

Arcel Vazquez Blume

Evaluation and Planning Manager

408-491-6822

[arcel.blume@ssa.sccgov.org](mailto:arcel.blume@ssa.sccgov.org)

## EXECUTIVE SUMMARY

The Child Welfare Outcome and Accountability Report provides a quarterly update on progress toward continuous child welfare improvements for the Santa Clara County Department of Family and Children's Services (SCC DFCS). The report presents both Federal and State indicators. Tracking the County's performance on these indicators is important as the State faces potential financial sanctions for failure to demonstrate improvement.<sup>1</sup> The standards for the federal indicators were set according to states' performance in 2004 at the 75 percentile, challenging states to meet or exceed these national standards. In addition to the federal indicators, the California Department of Social Services, UC Berkeley, and State counties continue to revise the methodology for State-specific indicators and continue to add more robust indicators (e.g., placement stability using entry cohorts). The reader should be aware that data presented will usually have a time lag of approximately 6 months.<sup>2</sup> Therefore, programmatic improvements described in the report will not be readily observed, particularly for indicators requiring a longer window of review (e.g., entry cohort indicators).

### SUMMARY FINDINGS

The present report finds important improvements for several child outcomes and social work performance. Interesting changes are noted in the child welfare participation as a function of race/ethnicity. For instance, while referral, substantiation, and entry rates continue to decline each year, differences emerge across the groups. For example, a post hoc analysis finds that African Ancestry children have a markedly higher referral rate than other children. However, the substantiation rate per 1,000 African Ancestry children is beginning to converge with the group average. The incidence rate per 1,000 children for entries into care have also markedly declined for African Ancestry children but still remains noticeably higher than the group average of 1.5 per 1,000 children at 7.9 per 1,000 children. For Latino children, their referral rate has not changed much, but remains high; however, their incidence rates for both substantiation and entry into care continue to decline.

A review of indicators with goals show that for the second quarter period, re-entry into foster care and placement stability within 12 months of entry continue to exceed their respective national goals. Additionally, children continue to experience safety in foster care placements (i.e., no maltreatment in foster care), and timely family reunifications continue to exceed the national goal. Furthermore, social workers continue to respond in a timely manner to immediate response referrals and have timely visits with children. More importantly, social workers' child visits are not moderated by children's race or ethnicity. In summary, 15 of 22 indicators with goals either met the goal or show improvement compared to the same period a year prior. Of the Federal indicators, five indicators were met across the following constructs: no maltreatment in foster care, timeliness and permanency of reunification, timely adoption after legally free, and placement stability. Two of the five State indicators were met (i.e., *timely response to immediate referrals*, and *timely social worker visits*). SCC's System Improvement Plan (SIP) uses several State and Federal indicators to track progress on its five overarching goals. These goals and corresponding target indicators are described in the *Introduction* section of the report.

Notable improvements and challenges are highlighted below.

---

<sup>1</sup> See ACL 00-25, which references: Department of Health and Human Services, Administration for Children and Families (2000). 45 CFR Parts 1355, 1356 and 1357. *Federal Register*, 65(16), 4020-4093.

<sup>2</sup> See "Structure and Methodology" in the Introduction section of the report.

## IMPROVEMENT FINDINGS

### **Child Safety: “Children are first and foremost protected from abuse and neglect.”**

*Children experience safety in foster care.* Children continue to experience safety in foster at a rate that exceeds the national goal 99.68 percent or greater, at 99.79 percent. More importantly, the standard is met for all children regardless of their race or ethnicity.

*Social workers continue to respond in a timely manner to immediate response referrals.* Performance for this indicator has historically been strong and continues to exceed the County goal of 95 percent at 98 percent (see p. 10). The State goal is set at 90 percent.

*Children receive timely visits from their social workers.* The timeliness of social worker visits continues to exceed the County goal of 95 percent at 95.6 percent (see p. 11). More importantly, the goal is met for all children regardless of their race or ethnicity.

### **Permanency and Stability: “Children have permanency and stability in their living situations without increasing entry into foster care.”**

#### Timeliness and Permanency of Reunification

*Children experience timely reunifications.* When following children from first entry, 52 percent are reunified within 12 months, exceeding the national goal of 48.4 percent (see C1.3, p. 13); compliance to this goal dates from the period of Jul-Dec 2007. The median time to reunification continues to decline (from 6.8 months in Jan-Dec 2009 to 4.8 months in Jan-Dec 2010) and is now within the national goal of 5.4 months or less.

*There is permanency in children’s family reunifications.* For the second quarter period, re-entry into foster care continues to meet the national goal of 9.9 percent. In a post hoc analysis, data show that over the past two years, the re-entry rate for African Ancestry has markedly declined; from a peak of 36.5 percent in Jan-Dec 2008 to 12.9 percent in Jan-Dec 2009.

#### Timeliness of Adoption

*Children legally free for adoption experience timely adoptions.* For the first time, SCC exceeds the national goal of 53.7 percent for children adopted within 12 months of being legally freed for adoption at 55.3 percent. Interestingly, a post hoc analysis on trend data show that there are two paths to timely adoptions; these appear to be a function of children’s race/ethnicity. Caucasian and Asian/ Pacific Islander children are more likely to have their adoptions finalized within 12 months of being legally free than African Ancestry and Latino children. A closer inspection of the data shows that when the caregiver in the last placement prior to the child exiting foster care due to adoption is a non-relative (presumably the child is placed with the adoptive parent prior to exiting foster care), freed children are either close to exceeding or exceed the national goal of 53.7 percent for finalized adoptions within 12 months (N=96, 63%). However, when the caregiver is a relative, Latino children (N=53, 40%) and African Ancestry children (N=5, 40%) that are freed for adoption are less likely to have their adoptions finalized within 12 months. Caucasian children (N=6, 83%) and API children (N=1, 100%), on the other hand, are far more likely to far exceed the national goal. Thus, one may determine that how family responds to adoptions varies across different race and ethnicity groups that may be a function of their particular norms or values. This may have implications for how social workers help families understand the many legal paths to permanency. This is an area that is being addressed by Santa Clara County’s participation in CAPP and in the work of the Cultural Dialogue Series.

#### Placement Stability

*Children experience more stability in foster care.* For the second concurrent period, SCC meets the goal for placement stability (C4.1) of 86 percent. Of children entering foster care for 8 days through 12 months, 88.9 percent experience no more than two placements during their first year in care. In

addition, the impact of closing the Children's Shelter and the subsequent opening of the Receiving, Assessment and Intake Center (RAIC, October 1, 2009), which is now reflected in the historical trend data, did not negatively impact children's stability in foster care. In the past five study periods, where at least some child entries occurred after the opening of RAIC, performance on this measure continues to improve and finally exceeds the national goal! To date, the transition from the shelter to the RAIC has been very successful and no child has remained at the RAIC for 24 hours or more.

**Child and Family Well-being: "The family relationships and connections of children will be preserved, as appropriate."**

*Most children are placed with some or all of their siblings.* The majority of children in foster care are placed with some or all of their siblings (72.7%), preserving what are typically very strong family connections (see p. 17). Fifty-eight percent of children with siblings are placed with all of their siblings. This effect is strongest from African Ancestry and Latino sibling sets, and has shown recent improvement for Caucasian sibling sets.

## CHALLENGES

Challenges reflected in this quarterly report include recurrence of maltreatment, timely adoptions, permanency for children in long-term foster care, and placements with relatives.

The three most recent study periods show a decrease in child safety within 6 months of a substantiated allegation. The April 2011 Child Welfare Quarterly Report showed a relationship between the unemployment rate and CalWORKs on the non-recurrence of maltreatment. A post hoc analysis finds another area of concern, which is the precipitous decline in the non-recurrence of maltreatment for African Ancestry children (see S1, p. 8). While trending upward for over a year until Jul09-Dec09, the last two most recent study periods (Oct09-Mar10, Jan10-Jun10) show marked downward trend in the safety of African Ancestry children.

Timely Adoptions continue to be a challenge, but overall improvement is observed in the four most recent study periods (see C2). Please see Special Analytic Report on Adoption for a full analysis.

The rate of permanency for all children in foster care is on a downward trend (see C3), after having been on an improvement trend. This effect is mainly a function of children in care for 24 months or longer (C3.1) and youths exiting to emancipation who were in care for 3 years or longer (C3.3). It is expected that Santa Clara County's participation in CAPP will have further positive impact in the lives of these children.

A post hoc analysis on sibling placements finds a declining trend in the percent of Asian/ Pacific Islander sibling sets that experience placement with all of their siblings. In July 2009, 69.2 percent of API children experienced placements with all their siblings (n = 26 sibling sets). By Jan 2011, only 15.4 percent of children with siblings were placed together (n = 13 sibling sets). Moreover, API children are also less likely to experience placement with either some or all of their siblings (46%), followed by Caucasian (39%) children.

Fewer children are placed with relatives or non-related extended family members and this is particularly true for African Ancestry (34%) and Asian/ Pacific Islander (22%) children (point-in-time; see Figure 2, p. 17). In the April 2011 Child Welfare Quarterly Report, it was shown that these children, in particular, are experiencing declines in placement with relatives or non-related extended family members. DFCS is in the process of aligning different efforts such as CAPP, Institutional Analysis, Peer Quality Case Review and Self Assessment to identify opportunities to further address these and other related trends and concerns.

## Table of Contents

INTRODUCTION .....	1
SCC Child Welfare Improvement Efforts .....	1
Structure and Methodology.....	3
SANTA CLARA COUNTY CHILD WELFARE QUARTERLY DASHBOARD .....	4
HISTORICAL DATA CHARTS AND RACE/ETHNICITY TABLES .....	7
Participation Rates.....	7
Child Safety .....	8
Timeliness and Permanency of Reunification.....	11
Timeliness to Adoption .....	14
Permanency for Children in Long-term Care .....	17
Placement Stability .....	19
Child and Family Well-being .....	21
Child Health Well-being .....	23

## INTRODUCTION

The Child Welfare Outcomes and Accountability Report provides a quarterly update on SCC's progress toward continuous child welfare improvements.<sup>3 4</sup> The Outcomes and Accountability Report is also a tool to help guide management actions. Through dialogue with DFCS and other Agency stakeholders, the report may help elicit analytic questions to better understand and continue to improve outcomes and performance, as appropriate.

### SCC Child Welfare Improvement Efforts

The 2009 System Improvement Plan highlights several goals and strategies to improve child and family outcomes that reflect both internal and State priorities. Concrete and measurable actions will be used to allow supervisors, managers, and administrators to track implementation success and how these relate to children's safety, permanency and stability, and well-being. Five key SIP goals follow (*target indicators follow each priority area*):

**1. Improve the safety of children.** A three-pronged approach will be used to improve the safety of children coming into contact with child welfare. The first approach has managers reviewing all emotional abuse referrals. About a quarter of all referrals are for emotional abuse, a rate that increased after the disuse of the substantial risk allegation (which the Department now only uses to classify voluntary cases). Secondly, social workers will assess all families using the Comprehensive Assessment Tool (CAT) at each decision point in the life of a case and will use consistent documentation protocols for investigative narratives. In this manner, all families will be looked at through the same comprehensive lens in order to fully capture their individual needs. Thirdly, the Emergency Response and Dependency Intake functions will be redesigned to support the abovementioned approaches.

- S1 No recurrence of maltreatment (see p. 8)

**2. Reduce the disproportionate representation of children of color in the foster care system, with a focus on children re-entering care.** Reducing disproportionality, particularly of African American children, remains a top priority and major concern for the Agency. In general, across indicators of referral and entry, child safety, permanency and stability, and well-being, African American children are more likely to experience lower outcomes compared to children of other ethnic or racial backgrounds. Two intervention strategies will be implemented to reduce ethnic disproportionality. First, front end strategies will be expanded by contracting with service providers who will offer culturally-specific services in the facilitation of family team meetings and on-demand consultation for specific ethnic populations. The Department will prioritize services for African American families. Second, the Agency will continue to tailor and expand training for managers, supervisors, and staff that promotes cultural sensitivity relating to child protection and well-being. By providing culturally-focused services both internally (e.g., through social workers) and externally (e.g., through contractors), families may be more likely to engage in services thereby improving family reunification outcomes, as well as the sustainability of reunification efforts.

Other tools and resources used to reduce disproportionality include a report developed by the SPHERE Institute that tracks the proportion of children involved in the child welfare system by ethnicity/race at key child welfare decision points. Managers use this quarterly report to watch for significant variations that may relate to important changes in practice. Finally, the Unified Children of Color Task Force's

---

<sup>3</sup> State Accountability Act, Assembly Bill (AB) 636, California-Children & Family Services Review, 2001.

<sup>4</sup> Administration for Children and Family Services, Department of Health and Human Services (2006). The data indicators, data composites and National standards to be used in the Child and Family Services Reviews. Federal Register (71)109, 32969-32987.

annual plan has proven effective at addressing and uncovering areas that need further attention. The task force is presently operationalizing and implementing its 2009 plan, which will rely on SPHERE's tracking report to monitor and assess the impact of key program elements.

- First entry into care (see p. 7)
- C1.4 Re-entry following reunification (see p. 13)

**3. Increase child and family involvement in case planning.** Families and children who are engaged in developing their case plans are more likely to participate and complete services. Engagement in case planning may be a vehicle by which children experience greater stability while in care and are then successfully reunified with their families. To this end, DFCS will enhance training to include creative ways to engage children and their families in case planning and expand outreach efforts to have all key family members participate in case planning. All children over the age of 10 years, incarcerated parents, and less-involved fathers and mothers will be engaged to improve their participation in case planning.

- C1.3 Reunification, entry cohort (see p. 12)
- C4.1 Placement stability, 8 days to 12 months in care (see p. 19)

**4. Increase timeliness of adoptions.** Concurrent plans help identify the best placement option while children are in foster care. Later, if reunification is not possible, the concurrent home is more likely to turn into the child's permanent home, which would occur preferably through adoption or guardianship. In some instances, the concurrent caregiver may not be able to formally adopt or become the guardian but may nonetheless continue to be the permanent caregiver of the child. To increase the number of children placed in concurrent homes, social workers will develop the alternative placement plan required by concurrent planning for all children in out-of-home care within 30 days of their first placement. This will entail identifying potential caregivers who can serve as the permanent caregiver for the child when if reunification efforts are not successful.

- C2.3 Adoption within 12 months of being in care for 17 months or longer (see p. 15)
- C2.5 Adoption within 12 months of becoming legally free for adoption (see p. 16)

**5. Ensure that all children have timely medical and dental services and, when needed, educational services and supports.** The State in partnership with UC Berkeley is launching indicators to track timely completion of medical and dental exams starting in July 2009 and children's need for individualized education plans (IEP) in October 2009. In preparation, the Department engaged in thorough case review to ensure that all children have current medical and dental exams.

- 5B Timely Medical Exams
- 5B Timely Dental Exams
- 6B Individualized Education Plan

## Structure and Methodology

To report on child welfare outcomes and performance, the report is divided into two sections:

In the first section, the Santa Clara County Child Welfare Quarterly Dashboard presents trend performance data for Federal and State indicators with goals. To gauge performance over time, three presentations are made available. First, a trend chart depicts actual performance set against the goal. Secondly, actual performance is presented in a table format across time. Thirdly, relative performance to the goal is provided across time and is color coded to quickly assess distance from actual performance to the goal. When the goal is achieved or exceeded, the corresponding cell is shaded light green with a bright green circle in the center. When the goal is within 90 percent of the goal, the corresponding cell is shaded light yellow with an orange diamond in the center. Finally, when the percent achieved is less than 90 percent, the corresponding cell is shaded light gray with a bright red square in the center.

The second section is characterized by its attention to the experience of children as a function of their race or ethnicity. Therefore, with a few exceptions, charts present historical data for the four most representative ethnic/racial groups in Santa Clara County: African Ancestry, Caucasian, Latino, and Asian/ Pacific Islander. Charts provide trend lines for each group as well as the goal line to help the reader determine a group's performance relative to the goal. In addition, a side table provides general information on the indicator for the most recent study period. The row providing the performance rate is also color coded to quickly remind the reader on the indicator's relative performance to the goal. Again, light green shaded cells denote that the rate meets or exceeds the goal, light yellow shaded cells denote that the rate is within 90 percent of goal, and light gray shaded cells denote that the rate is less than 90 percent of goal achieved.

Three main methods are used to report on child welfare outcomes and performance. First, entry cohort indicators assess *all* children's experiences longitudinally. This method provides a more comprehensive understanding of children's experiences in the child welfare system. Second, exit cohort indicators assess children's experiences as they exit the child welfare system. Third, median time is used to assess the time that it takes to reunification or adoption.

To evaluate performance:

- All federal indicators/composites are compared against national standards or goals.
- Present performance is compared to last year's performance.
- Select charts compare SCC against Statewide performance.<sup>5</sup>

Data used in the present report was provided by the Center for Social Sciences Research, UC Berkeley.<sup>6</sup>

---

<sup>5</sup> Caution is advised for indicators or descriptive categories with statistically small numbers (e.g., maltreatment in foster care, Native Americans receiving child welfare services).

<sup>6</sup> To learn more about California child welfare performance data, visit <http://cssr.berkeley.edu/CWSCMSreports>.

# SANTA CLARA COUNTY CHILD WELFARE QUARTERLY DASHBOARD

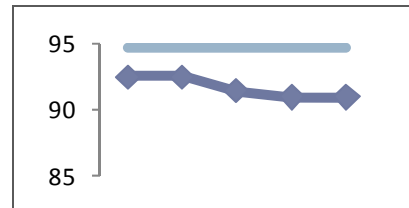
## Child Safety, Permanency and Stability Indicators with Standards July 2011 Report

Legend	abbreviations	EG = Equal or Greater than	EL = Equal or Less than	LT = Less than
	level achieved	● GOAL ACHIEVED	◆ Goal achieved EG 90 %	■ Goal achieved LT 90%

### Child Safety

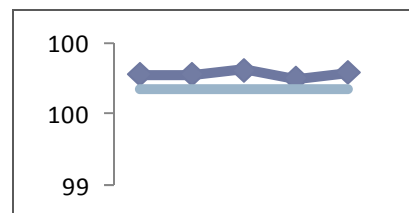
<b>S1. Absence of recurrence of maltreatment</b>
Goal EG 94.6 / Performance
Relative performance to goal

JAN09-JUN09	APR09-SEP09	JUL09-DEC09	OCT09-MAR10	JAN10-JUN10
92.5	92.5	91.4	90.9	90.9
0.98	0.98	0.97	0.96	0.96
◆	◆	◆	◆	◆



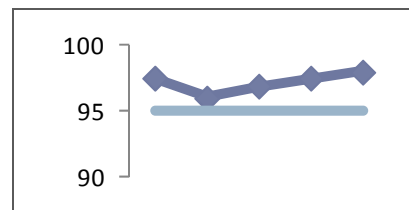
<b>S2. Absence of abuse in foster care</b>
Goal EG 99.68 / Performance
Relative performance to goal

JAN09-DEC09	APR09-MAR10	JUL09-JUN10	OCT09-SEP10	JAN10-DEC10
99.8	99.8	99.8	99.8	99.79
1.00	1.00	1.00	1.00	1.00
●	●	●	●	●



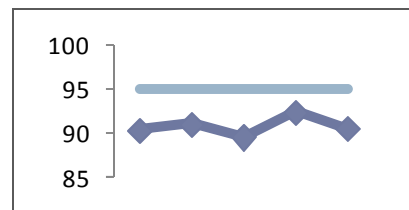
<b>2B. Timely social worker response to immediate response referrals</b>
Goal EG 95.0 / Performance
Relative performance to goal

OCT09-DEC09	JAN10-MAR10	APR10-JUN10	JUL10-SEP10	OCT10-DEC10
97.4	96	96.8	97.4	98
1.03	1.01	1.02	1.03	1.03
●	●	●	●	●



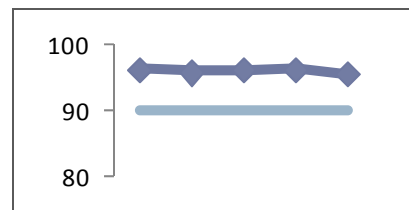
<b>2B. Timely social worker response to 10-day referrals</b>
Goal EG 95.0 / Performance
Relative performance to goal

OCT09-DEC09	JAN10-MAR10	APR10-JUN10	JUL10-SEP10	OCT10-DEC10
90.3	91.0	89.5	92.4	90.5
0.95	0.96	0.94	0.97	0.95
◆	◆	◆	◆	◆



<b>2C. Timely social worker visits</b>
Goal EG 90.0 / Performance
Relative performance to goal

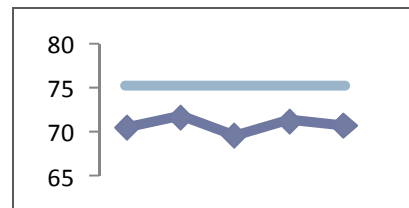
OCT09-DEC09	JAN10-MAR10	APR10-JUN10	JUL10-SEP10	OCT10-DEC10
96.5	96.3	96.3	96.4	95.8
1.07	1.07	1.07	1.07	1.06
●	●	●	●	●



### Timeliness of Family Reunification and Permanency of Reunification

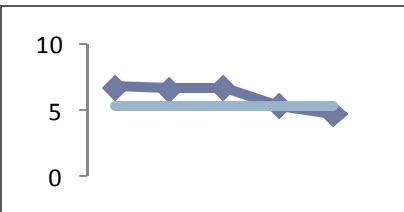
<b>C1.1. Reunification within 12 months for children exiting care</b>
Goal EG 75.2 / Performance
Relative performance to goal

JAN09-DEC09	APR09-MAR10	JUL09-JUN10	OCT09-SEP10	JAN10-DEC10
70.5	71.8	69.7	71.3	70.8
0.94	0.95	0.93	0.95	0.94
◆	◆	◆	◆	◆



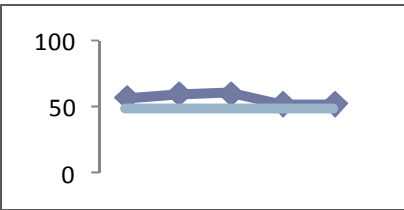
**C1.2. Median time to reunification**  
 Goal EL 5.4 months/  
 Performance  
 Relative performance to goal

JAN09-DEC09	APR09-MAR10	JUL09-JUN10	OCT09-SEP10	JAN10-DEC10
6.8	6.6	6.7	5.4	4.8
0.79	0.82	0.81	1.00	1.13
■	■	■	●	●



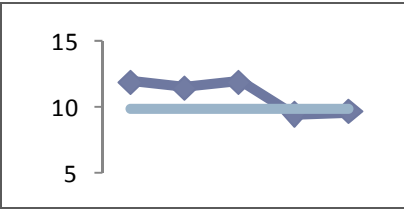
**C1.3. Reunification within 12 months for a cohort of children entering care**  
 Goal EG 48.4 / Performance  
 Relative performance to goal

JUL08-DEC08	OCT08-MAR09	JAN09-JUN09	APR09-SEP09	JUL09-DEC09
56.0	59.6	60.5	52.6	52.0
1.16	1.23	1.25	1.09	1.07
●	●	●	●	●



**C1.4. Re-entry into foster care within 12 months from reunification**  
 Goal EL 9.9 / Performance  
 Relative performance to goal

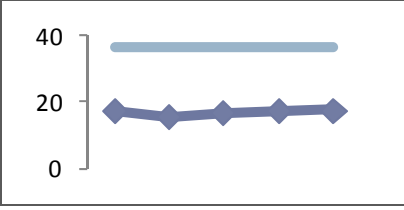
JAN08-DEC08	APR08-MAR09	JUL08-JUN09	OCT08-SEP09	JAN09-DEC09
11.9	11.4	11.9	9.4	9.6
0.83	0.87	0.83	1.05	1.03
■	■	■	●	●



**Timeliness to Adoption**

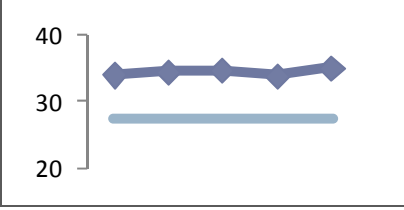
**C2.1. Adoption within in 24 months for children exiting to adoption**  
 Goal EG 36.6 / Performance  
 Relative performance to goal

JAN09-DEC09	APR09-MAR10	JUL09-JUN10	OCT09-SEP10	JAN10-DEC10
17.1	15.6	16.6	17.2	17.7
0.47	0.43	0.45	0.47	0.48
■	■	■	■	■



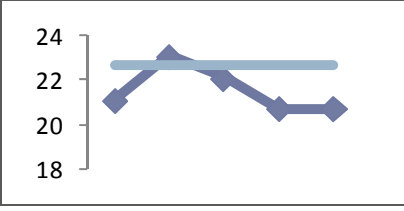
**C2.2. Median time to adoption**  
 Goal EL 27.3 months / Performance  
 Relative performance to goal

JAN09-DEC09	APR09-MAR10	JUL09-JUN10	OCT09-SEP10	JAN10-DEC10
34.0	34.4	34.7	33.9	35.2
0.80	0.79	0.79	0.81	0.78
■	■	■	■	■



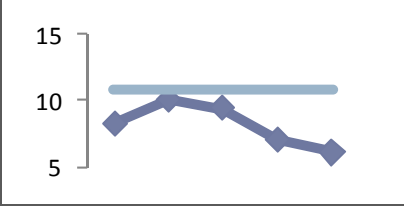
**C2.3. Adoption w/in 12 months for children in care 17 months or longer**  
 Goal EG 22.7 / Performance  
 Relative performance to goal

JAN09-DEC09	APR09-MAR10	JUL09-JUN10	OCT09-SEP10	JAN10-DEC10
21.1	23.1	22.1	20.7	20.7
0.93	1.02	0.97	0.91	0.91
◆	●	◆	◆	◆



**C2.4. Legally free within 6 months for children in care 17 months or longer**  
 Goal EG 10.9 / Performance  
 Relative performance to goal

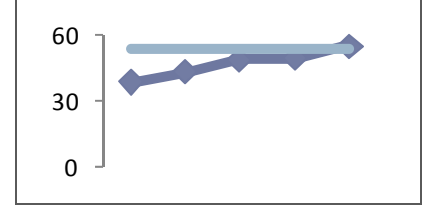
JAN09-JUN09	APR09-SEP09	JUL09-DEC09	OCT09-MAR10	JAN10-JUN10
8.2	10.1	9.4	7.0	6.1
0.75	0.93	0.86	0.64	0.56
■	◆	■	■	■



**C2.5. Adoption within 12 months after being legally freed**

Standard EG 53.7 / Performance  
Percent achieved

JAN08-DEC08	APR08-MAR09	JUL08-JUN09	OCT08-SEP09	JAN09-DEC09
38.5	43.2	48.8	49.4	55.3
0.72	0.80	0.91	0.92	1.03
■	■	◆	◆	●

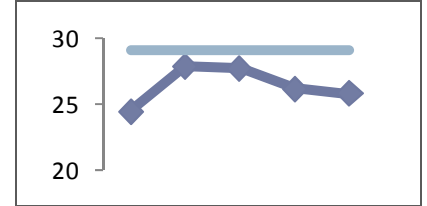


**Permanency for Children in Long-term Care**

**C3.1. Exits to permanency for children in care 24 months or longer**

Standard EG 29.1 / Performance  
Percent achieved

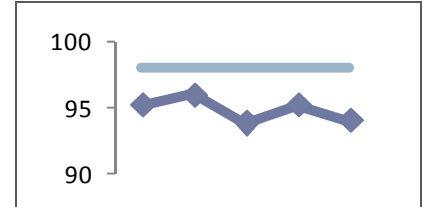
JAN09-DEC09	APR09-MAR10	JUL09-JUN10	OCT09-SEP10	JAN10-DEC10
24.9	27.9	27.7	26.2	25.8
0.86	0.96	0.95	0.90	0.89
■	◆	◆	◆	■



**C3.2. Exits to permanency for children exiting foster care and legally free for adoption**

Standard EG 98.0 / Performance  
Percent achieved

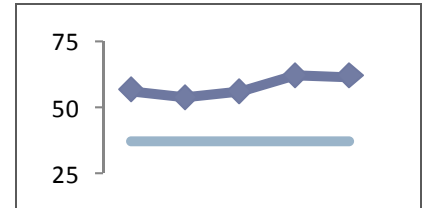
JAN09-DEC09	APR09-MAR10	JUL09-JUN10	OCT09-SEP10	JAN10-DEC10
95.1	96.0	93.8	95.1	93.9
0.97	0.98	0.96	0.97	0.96
◆	◆	◆	◆	◆



**C3.3. Exits due to emancipation or age of majority and in care 3 years or longer**

Standard EL 37.5 / Performance  
Percent achieved

JAN09-DEC09	APR09-MAR10	JUL09-JUN10	OCT09-SEP10	JAN10-DEC10
56.4	53.9	55.9	62.3	61.6
0.66	0.70	0.67	0.60	0.61
■	■	■	■	■

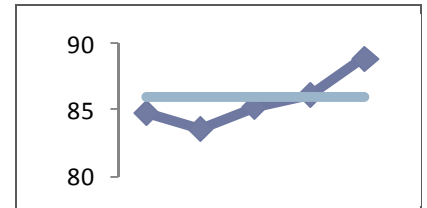


**Placement Stability**

**C4.1. Children with EL 2 placements, in care between 8 days and 12 months**

Standard EG 86.0 / Performance  
Percent achieved

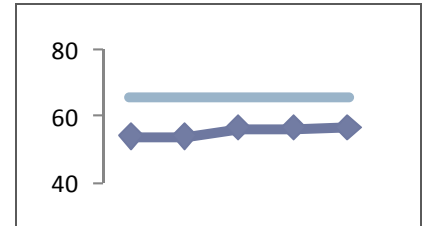
JAN09-DEC09	APR09-MAR10	JUL09-JUN10	OCT09-SEP10	JAN10-DEC10
84.8	83.6	85.2	86.1	88.9
0.99	0.97	0.99	1.00	1.03
◆	◆	◆	●	●



**C4.2. Children with EL 2 placements in the life of a case, in care btw 12 mos and 24 mos**

Standard EG 65.4 / Performance  
Percent achieved

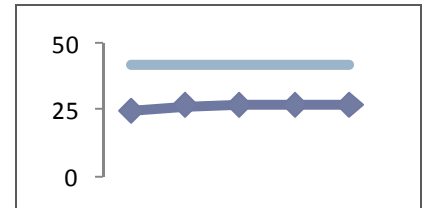
JAN09-DEC09	APR09-MAR10	JUL09-JUN10	OCT09-SEP10	JAN10-DEC10
54.0	53.9	56.4	56.4	56.7
0.83	0.82	0.86	0.86	0.87
■	■	■	■	■



**C4.3. Children with EL 2 placements in the life of a case, in care at least 24 months**

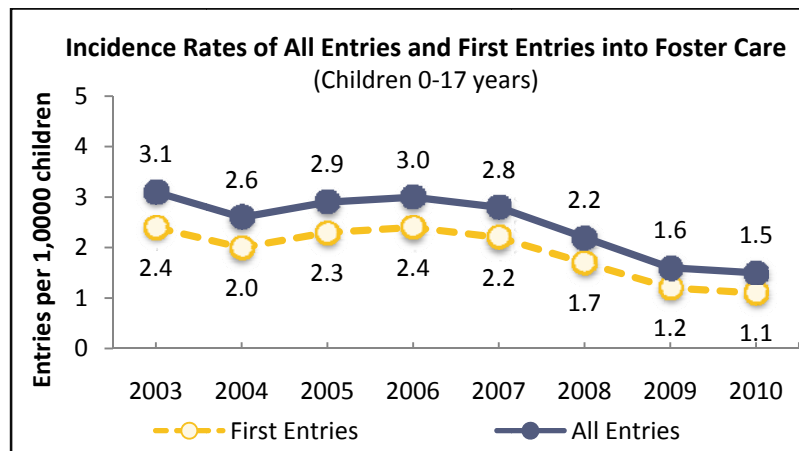
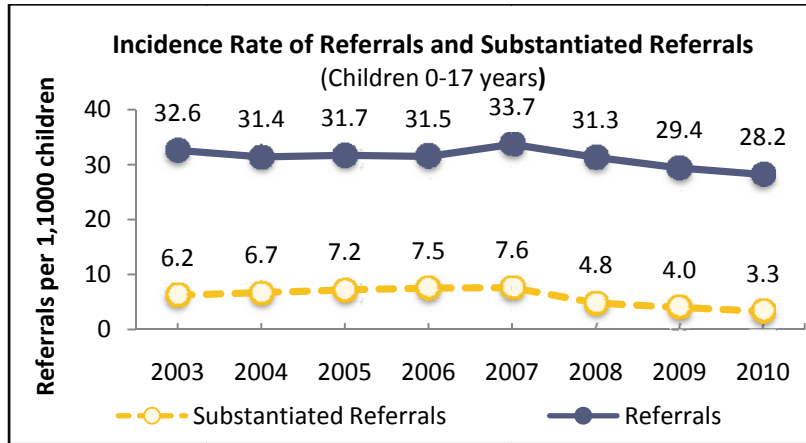
Standard EG 41.8 / Performance  
Percent achieved

JAN09-DEC09	APR09-MAR10	JUL09-JUN10	OCT09-SEP10	JAN10-DEC10
24.8	26.5	27.2	26.8	26.9
0.59	0.63	0.65	0.64	0.64
■	■	■	■	■



# HISTORICAL DATA CHARTS AND RACE/ETHNICITY TABLES

## Participation Rates

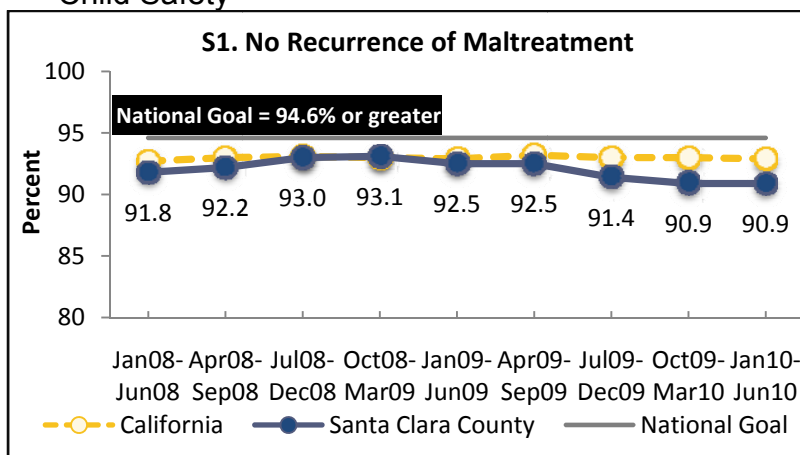


**Incidence Rate for Referrals, Substantiations and Foster Care Entries per 1,000 Children (CY 2010)**

Ethnicity	Referrals	Substantiated Referrals	All Entries
Black	112.6	12.1	7.9
White	19.9	2.0	1.0
Hispanic	45.6	6.0	2.6
Asian/ Pacific Islander	11.4	1.1	0.4
Native American	27.8	5.7	2.5
Total	28.2	3.3	1.5

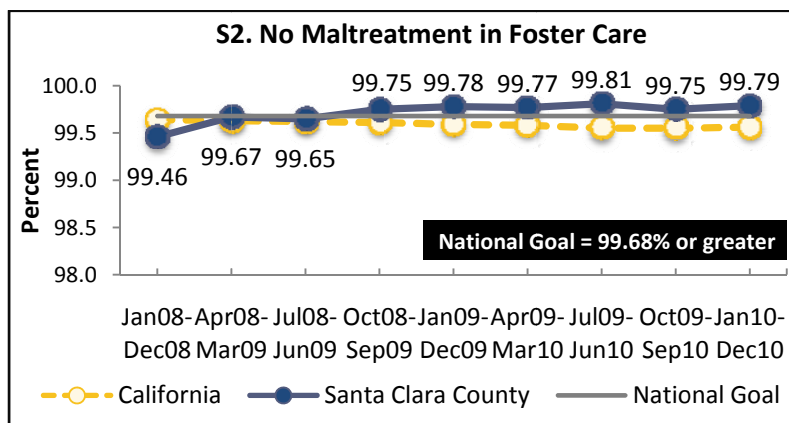
## Child Safety

S1. Of all children who were victims of a substantiated or indicated maltreatment allegation during the first 6 months of a year, what percent were not victims of another substantiated or indicated maltreatment allegation within the next 6-month period?



S1	National Standard	Last Year (Jan09- Jun09)		Current Period (Jan10- Jun10)	
		Rate	Goal met (✓) or not (✗)	Rate	Goal met (✓) or not (✗)
Black	≥ 94.6%	92.8%	✗	87.9%	✗
White	≥ 94.6%	87.8%	✗	94.1%	✗
Hispanic	≥ 94.6%	92.8%	✗	89.5%	✗
Asian/ Pacific Islander	≥ 94.6%	100.0%	✓	97.0%	✓
Native American	≥ 94.6%	100.0%	✓	80.0%	✗
Total	≥ 94.6%	92.5%	✗	90.9%	✗

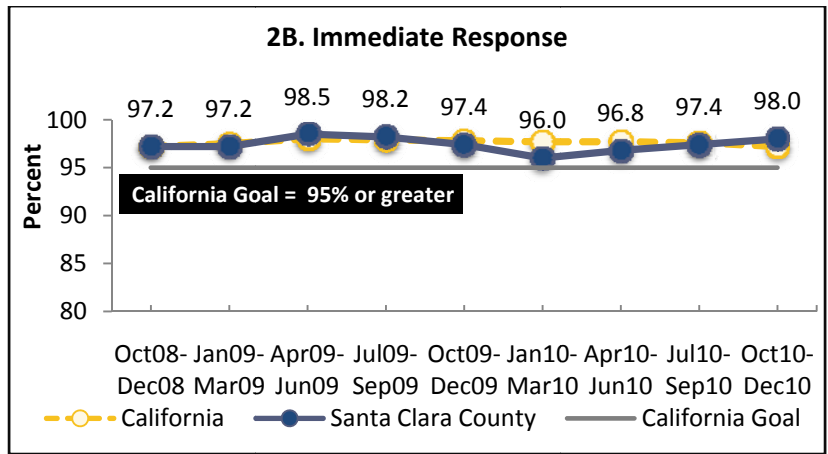
S2. Of all children served in foster care during the year, what percent were not victims of a substantiated maltreatment allegation by a foster parent or facility staff member?



S2	National Standard	Last year (Jan09- Dec09)		Current Period (Jan10- Dec10)	
		Rate	Goal met (✓) or not (✗)	Rate	Goal met (✓) or not (✗)
Black	≥ 99.68%	100.00%	✓	100.00%	✓
White	≥ 99.68%	99.49%	✗	100.00%	✓
Hispanic	≥ 99.68%	99.79%	✓	99.66%	✗
Asian/ Pacific Islander	≥ 99.68%	100.00%	✓	100.00%	✓
Native American	≥ 99.68%	100.00%	✓	100.00%	✓
Total	≥ 99.68%	99.78%	✓	99.79%	✓

2B. State Outcome indicator:

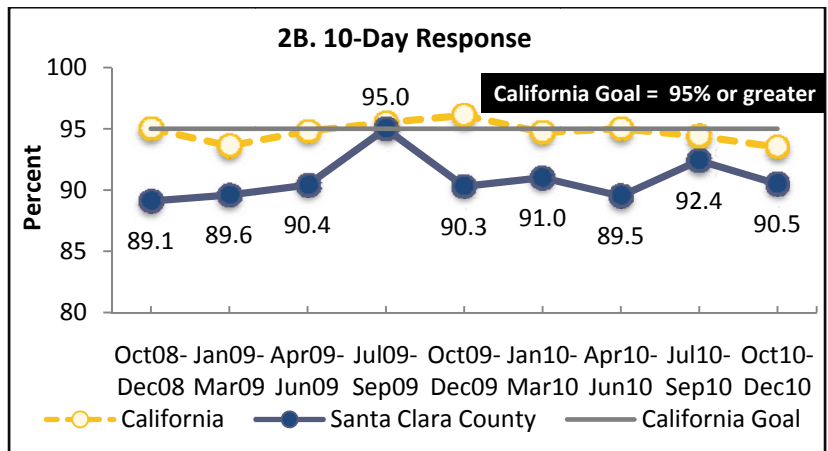
Percent of immediate response referrals with a timely response



2B- Immediate Response	California Goal	Last year (Oct09- Dec09)		Current Period (Oct10- Dec10)	
		Rate	Goal met (✓) or not (✗)	Rate	Goal met (✓) or not (✗)
Black	≥ 95%	97.1%	✓	100.0%	✗
White	≥ 95%	98.6%	✓	98.6%	✓
Hispanic	≥ 95%	96.9%	✓	97.4%	✓
Asian/ Pacific Islander	≥ 95%	97.8%	✓	97.9%	✓
Native American	≥ 95%	100.0%	✓	NA	NA
Total	≥ 95%	97.4%	✓	98.0%	✓

2B. State Outcome indicator:

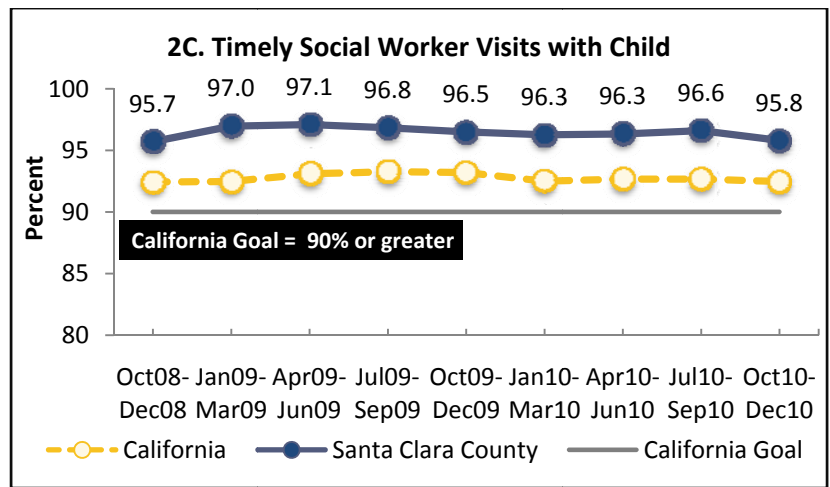
Percent of 10-day referrals with a timely response



2B- 1- Day Reponse	California Goal	Last year (Oct09- Dec09)		Current Period (Oct10- Dec10)	
		Rate	Goal met (✓) or not (✗)	Rate	Goal met (✓) or not (✗)
Black	≥ 95%	88.0%	✗	80.0%	✗
White	≥ 95%	88.6%	✗	89.3%	✗
Hispanic	≥ 95%	89.7%	✗	92.1%	✗
Asian/ Pacific Islander	≥ 95%	96.9%	✓	93.5%	✗
Native American	≥ 95%	100.0%	✓	83.3%	✗
Total	≥ 95%	90.3%	✗	90.5%	✗

2C. State Outcome indicator:

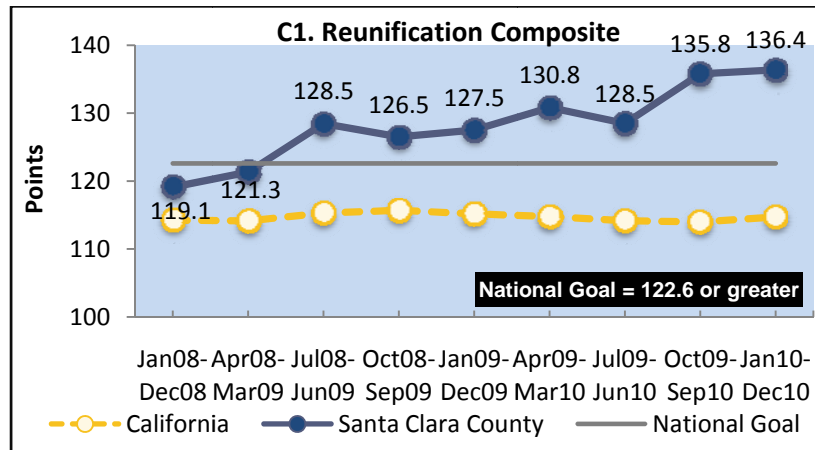
Percent of timely social worker visits with child.



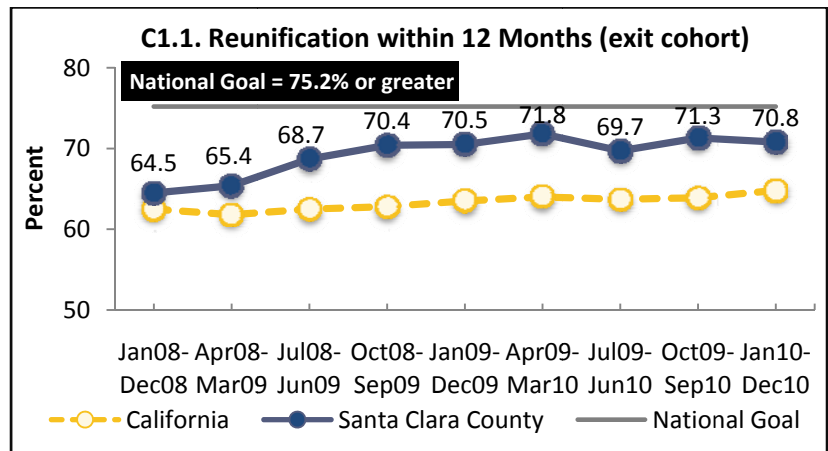
2C	California Goal	Last year (Oct09- Dec09)		Current Period (Oct10- Dec10)	
		Rate	Goal met (✓) or not (✗)	Rate	Goal met (✓) or not (✗)
Black	≥ 90%	96.7%	✓	98.2%	✓
White	≥ 90%	95.0%	✓	94.3%	✓
Hispanic	≥ 90%	96.5%	✓	95.2%	✓
Asian/ Pacific Islander	≥ 90%	97.8%	✓	98.3%	✓
Native American	≥ 90%	94.9%	✓	100.0%	✓
Total	≥ 90%	96.3%	✓	95.6%	✓

(Note: Due to a small number of children with missing ethnicity coding, the result of the ethnicity table is slightly different from the trend data in the chart above.)

## Timeliness and Permanency of Reunification

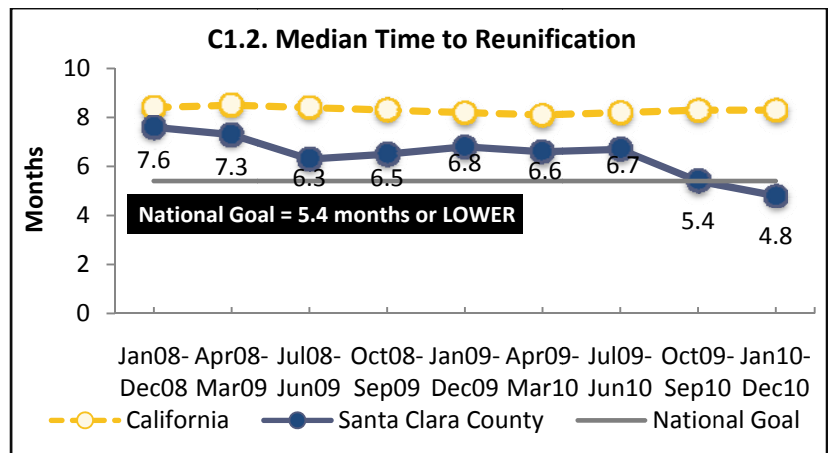


**C1.1.** Of all children discharged from foster care to reunification in the year who had been in foster care for 8 days or longer, what percent were reunified in less than 12 months from the date of the latest removal from home?



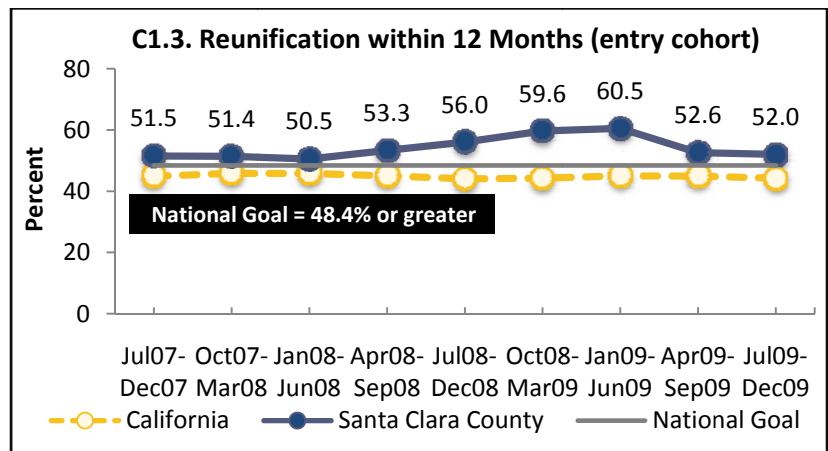
C1.1	National Standard	Last year (Jan09- Dec09)		Current Period (Jan10- Dec10)	
		Rate	Goal met (✓) or not (✗)	Rate	Goal met (✓) or not (✗)
Black	≥ 75.2%	81.4%	✓	77.8%	✓
White	≥ 75.2%	63.3%	✗	77.1%	✓
Hispanic	≥ 75.2%	70.1%	✗	66.9%	✗
Asian/ Pacific Islander	≥ 75.2%	74.3%	✗	78.4%	✓
Native American	≥ 75.2%	NA	NA	33.3%	✗
Total	≥ 75.2%	70.5%	✗	70.8%	✗

**C1.2.** Of all children in foster care for 8 days or longer discharged to reunification during the year, what was the median length of stay (in months) from the date of latest removal from home until the date of discharge to reunification?



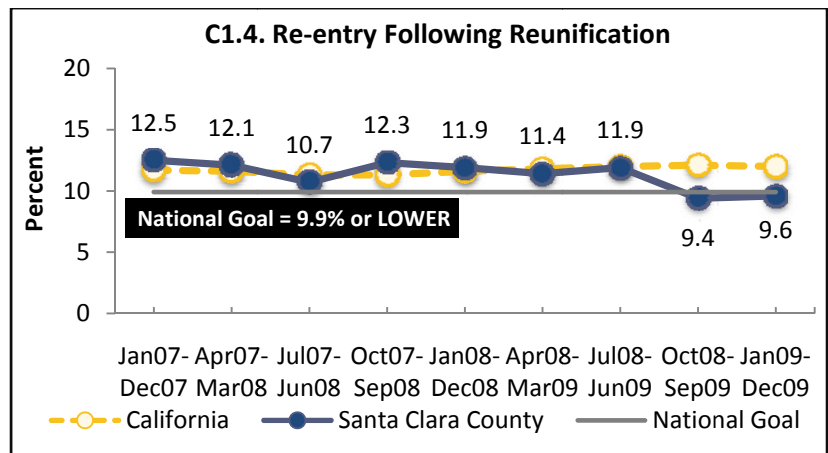
C1.2	National Standard	Last year (Jan09- Dec09)		Current Period (Jan10- Dec10)	
		Median Months	Goal met (✓) or not (✗)	Median Months	Goal met (✓) or not (✗)
Ethnicity	Month				
Black	≤ 5.4	5.7	✗	5.8	✗
White	≤ 5.4	8.9	✗	1.5	✓
Hispanic	≤ 5.4	6.8	✗	5.6	✗
Asian/ Pacific Islander	≤ 5.4	5.6	✗	6.8	✗
Native American	≤ 5.4	NA	NA	25.9	✗
Total	≤ 5.4	6.8	✗	4.8	✓

**C1.3.** Of all children entering foster care for the first time in a 6-month period, and who remained in foster care for 8 days or longer, what percent were discharged from foster care to reunification in less than 12 months from the date of latest removal from home?



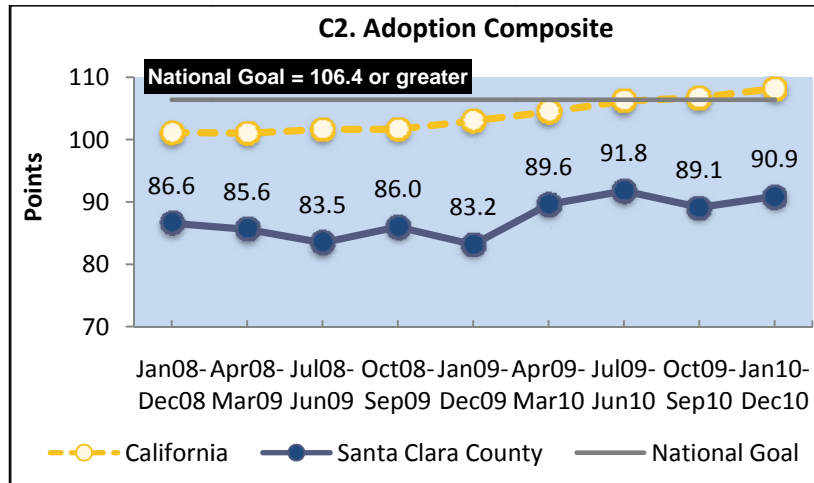
C1.3	National Standard	Last year (Jul08- Dec08)		Current Period (Jul09- Dec09)	
		Rate	Goal met (✓) or not (✗)	Rate	Goal met (✓) or not (✗)
Ethnicity	Rate				
Black	≥ 48.4%	48.0%	✗	43.8%	✗
White	≥ 48.4%	53.3%	✓	56.7%	✓
Hispanic	≥ 48.4%	57.8%	✓	52.6%	✓
Asian/ Pacific Islander	≥ 48.4%	52.9%	✓	50.0%	✓
Native American	≥ 48.4%	NA	NA	NA	NA
Total	≥ 48.4%	56.0%	✓	52.0%	✓

**C1.4.** Of all children discharged from foster care to reunification during the year, what percent reentered foster care in less than 12 months from the date of discharge?

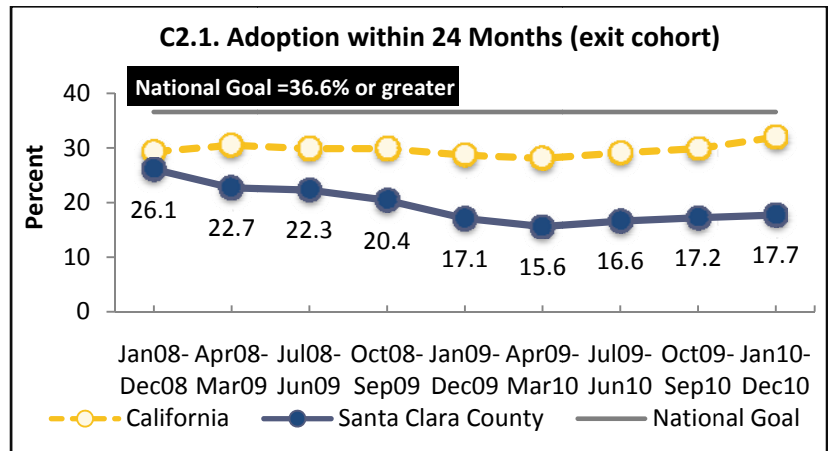


C1.4	National Standard	Last Year (Jan08- Dec08)		Current Period (Jan09- Dec09)	
		Rate	Goal met (✓) or not (✗)	Rate	Goal met (✓) or not (✗)
Black	≤ 9.9%	36.5%	✗	12.9%	✗
White	≤ 9.9%	8.6%	✓	10.5%	✗
Hispanic	≤ 9.9%	10.8%	✗	9.2%	✓
Asian/ Pacific Islander	≤ 9.9%	1.4%	✓	6.3%	✓
Native American	≤ 9.9%	NA	NA	NA	NA
Total	≤ 9.9%	11.9%	✗	9.6%	✓

## Timeliness to Adoption

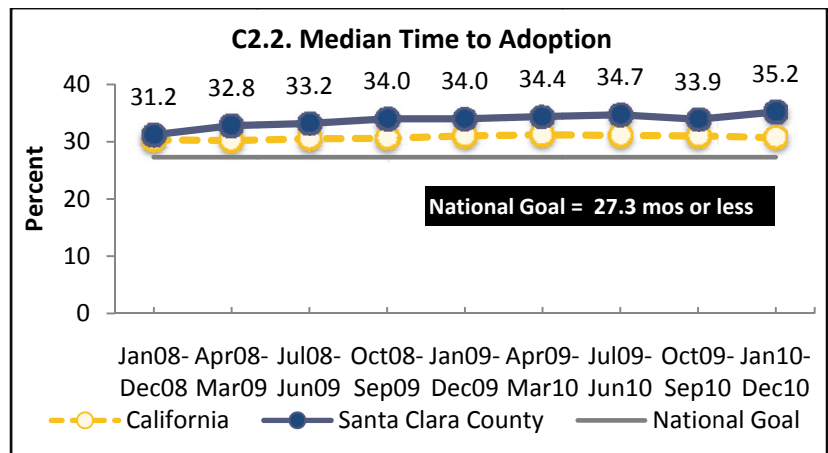


**C2.1.** Of all children who were discharged from foster care to a finalized adoption during a year, what percent were discharged in less than 24 months from the date of the latest removal from home?



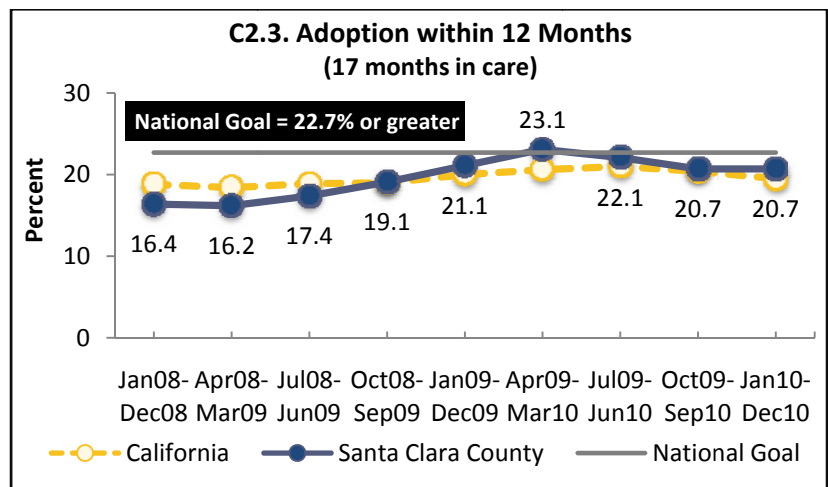
C2.1	National Standard	Last year (Jan09- Dec09)		Current Period (Jan10- Dec10)	
		Rate	Goal met (✓) or not (✗)	Rate	Goal met (✓) or not (✗)
Black	≥ 36.6%	35.0%	✗	19.0%	✗
White	≥ 36.6%	25.7%	✗	24.1%	✗
Hispanic	≥ 36.6%	11.0%	✗	14.7%	✗
Asian/ Pacific Islander	≥ 36.6%	44.4%	✓	40.0%	✓
Native American	≥ 36.6%	NA	NA	NA	NA
<b>Total</b>	≥ 36.6%	17.1%	✗	17.7%	✗

**C2.2.** Of all children who were discharged from foster care to a finalized adoption during the year, what was the median length of stay in foster care in months from the date of latest removal from home to the date of discharge to adoption?



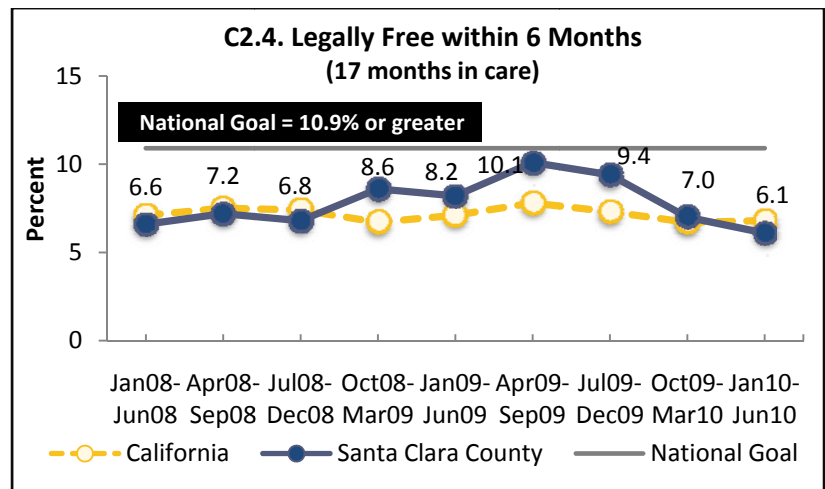
C2.2	National Standard	Last year (Jan09- Dec09)		Current Period (Jan10- Dec10)	
		Median Months	Goal met (✓) or not (✗)	Median Months	Goal met (✓) or not (✗)
Ethnicity	Month				
Black	≤ 27.3	33.3	✗	33.7	✗
White	≤ 27.3	29.7	✗	35.0	✗
Hispanic	≤ 27.3	36.5	✗	35.2	✗
Asian/ Pacific Islander	≤ 27.3	30.5	✗	25.3	✓
Native American	≤ 27.3	NA	NA	NA	NA
Total	≤ 27.3	34.0	✗	35.2	✗

**C2.3.** Of all children in foster care for 17 continuous months or longer on the first day of the year, what percent were discharged to a finalized adoption by the last day of the year?



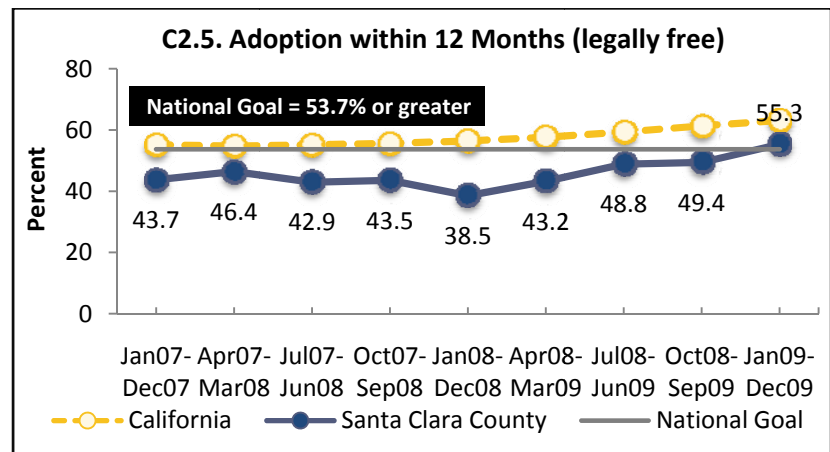
C2.3	National Standard	Last year (Jan09- Dec09)		Current Period (Jan10- Dec10)	
		Rate	Goal met (✓) or not (✗)	Rate	Goal met (✓) or not (✗)
Ethnicity	Rate				
Black	≥ 22.7%	13.0%	✗	20.5%	✗
White	≥ 22.7%	17.7%	✗	19.1%	✗
Hispanic	≥ 22.7%	24.3%	✓	22.3%	✗
Asian/ Pacific Islander	≥ 22.7%	13.2%	✗	10.0%	✗
Native American	≥ 22.7%	NA	NA	NA	NA
Total	≥ 22.7%	21.1%	✗	20.7%	✗

**C2.4.** Of all children in foster care for 17 continuous months or longer and not legally free for adoption on the first day of the year, what percent became legally free within the next 6 months?



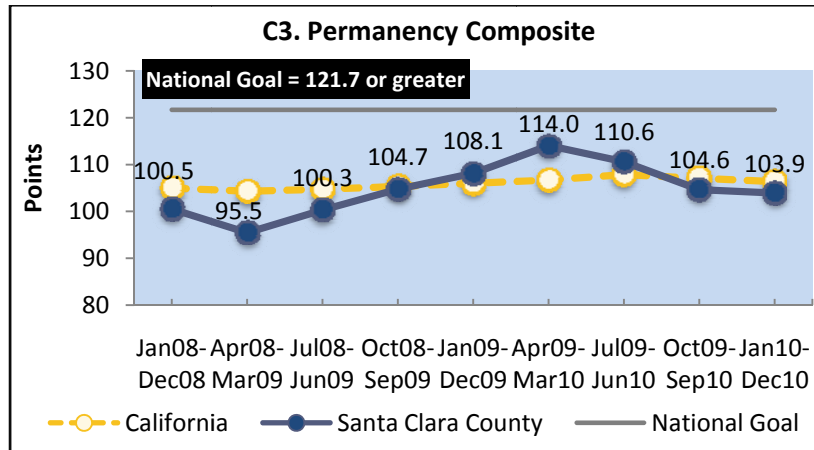
C2.4	National Standard	Last Year (Jan09- Jun09)		Current Period (Jan10- Jun10)	
		Rate	Goal met (✓) or not (✗)	Rate	Goal met (✓) or not (✗)
Ethnicity	Rate	Rate	Goal met (✓) or not (✗)	Rate	Goal met (✓) or not (✗)
Black	≥ 10.9%	12.2%	✓	3.4%	✗
White	≥ 10.9%	8.9%	✗	6.3%	✗
Hispanic	≥ 10.9%	7.6%	✗	7.5%	✗
Asian/ Pacific Islander	≥ 10.9%	3.0%	✗	NA	NA
Native American	≥ 10.9%	NA	NA	NA	NA
Total	≥ 10.9%	8.2%	✗	6.1%	✗

**C2.5.** Of all children in foster care who became legally free for adoption during the year, what percent were then discharged to a finalized adoption in less than 12 months?

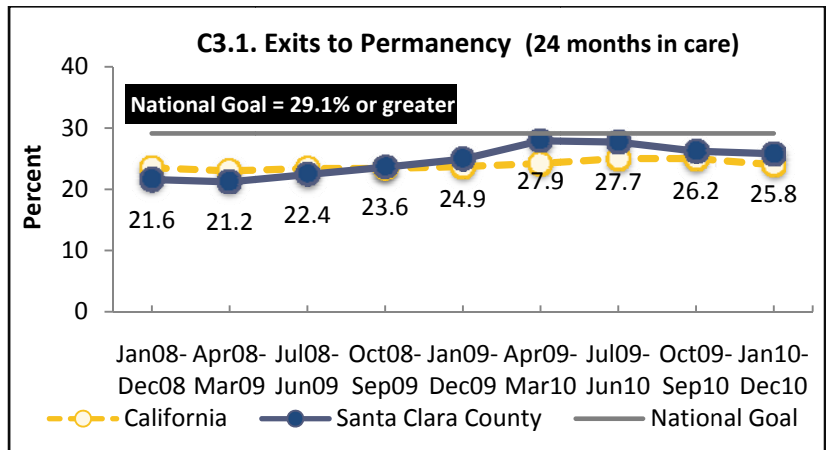


C2.5	National Standard	Last Year (Jan08- Dec08)		Current Period (Jan09- Dec09)	
		Rate	Goal met (✓) or not (✗)	Rate	Goal met (✓) or not (✗)
Ethnicity	Rate	Rate	Goal met (✓) or not (✗)	Rate	Goal met (✓) or not (✗)
Black	≥ 53.7%	29.4%	✗	50.0%	✗
White	≥ 53.7%	50.0%	✗	73.1%	✓
Hispanic	≥ 53.7%	33.9%	✗	51.3%	✗
Asian/ Pacific Islander	≥ 53.7%	70.0%	✓	75.0%	✓
Native American	≥ 53.7%	NA	NA	NA	NA
Total	≥ 53.7%	38.5%	✗	55.3%	✓

## Permanency for Children in Long-term Care

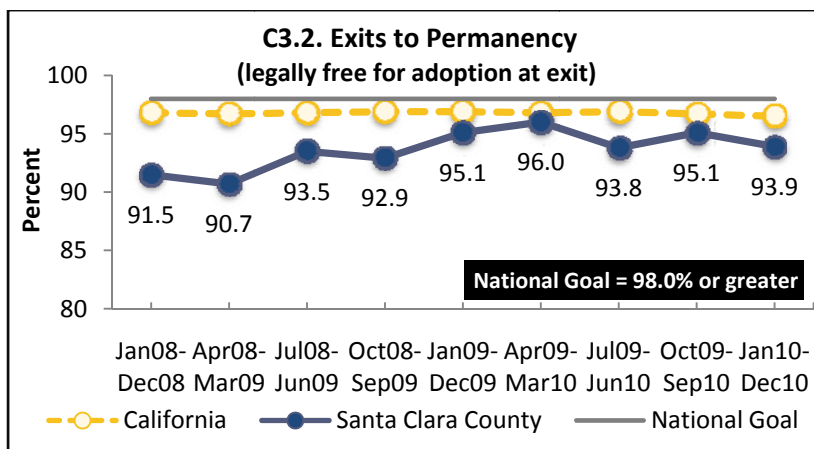


**C3.1.** Of all children in foster care for 24 months or longer on the first day of the year, what percent were discharged to a permanent home by the end of the year and prior to turning 18?



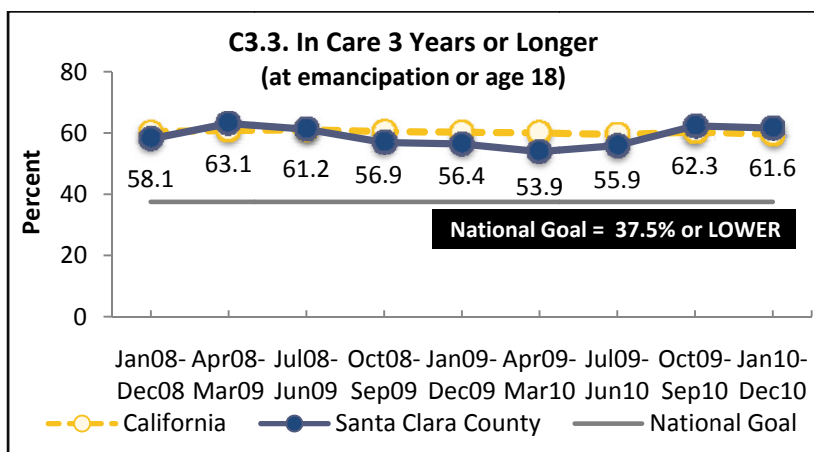
C3.1	National Standard	Last year (Jan09- Dec09)		Current Period (Jan10- Dec10)	
		Rate	Goal met (✓) or not (✗)	Rate	Goal met (✓) or not (✗)
Black	≥ 29.1%	18.0%	✗	27.6%	✗
White	≥ 29.1%	21.1%	✗	22.0%	✗
Hispanic	≥ 29.1%	28.0%	✗	27.4%	✗
Asian/ Pacific Islander	≥ 29.1%	17.6%	✗	15.3%	✗
Native American	≥ 29.1%	0.0%	✗	0.0%	✗
Total	≥ 29.1%	24.9%	✗	25.8%	✗

**C3.2.** Of all children discharged from foster care during the year who were legally free for adoption, what percent were discharged to a permanent home prior to turning 18?



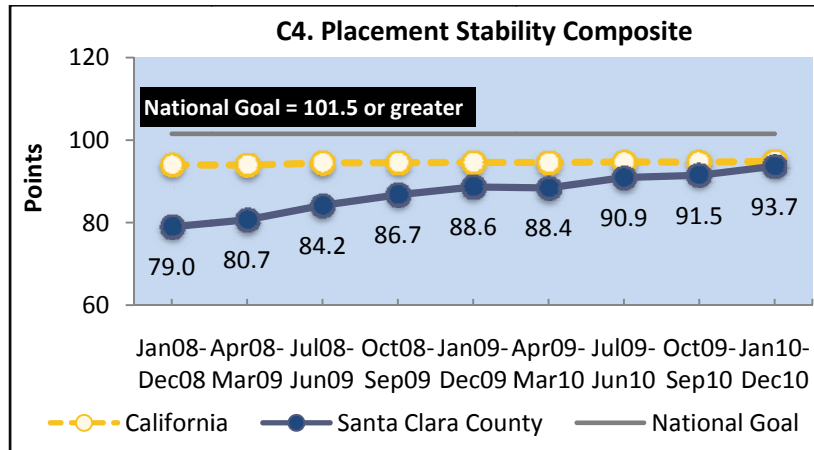
C3.2	National Standard	Last year (Jan09- Dec09)		Current Period (Jan10- Dec10)	
		Rate	Goal met (✓) or not (✗)	Rate	Goal met (✓) or not (✗)
Ethnicity	Rate	Rate	Goal met (✓) or not (✗)	Rate	Goal met (✓) or not (✗)
Black	≥ 98.0%	91.3%	✗	95.7%	✗
White	≥ 98.0%	94.7%	✗	93.3%	✗
Hispanic	≥ 98.0%	95.5%	✗	94.2%	✗
Asian/ Pacific Islander	≥ 98.0%	100.0%	✓	83.3%	✗
Native American	≥ 98.0%	NA	NA	NA	NA
Total	≥ 98.0%	95.1%	✗	93.9%	✗

**C3.3.** Of all children in foster care during the year who were either discharged to emancipation or turned 18 while still in care, what percent had been in foster care for 3 years or longer?

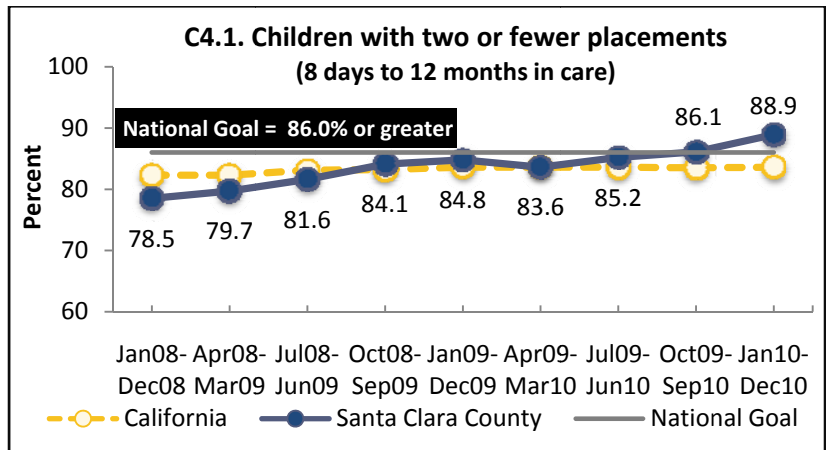


C3.3	National Standard	Last year (Jan09- Dec09)		Current Period (Jan10- Dec10)	
		Rate	Goal met (✓) or not (✗)	Rate	Goal met (✓) or not (✗)
Ethnicity	Rate	Rate	Goal met (✓) or not (✗)	Rate	Goal met (✓) or not (✗)
Black	≤ 37.5%	57.1%	✗	56.5%	✗
White	≤ 37.5%	60.0%	✗	73.1%	✗
Hispanic	≤ 37.5%	56.3%	✗	62.1%	✗
Asian/ Pacific Islander	≤ 37.5%	37.5%	✓	33.3%	✓
Native American	≤ 37.5%	NA	NA	100.0%	✗
Total	≤ 37.5%	56.4%	✗	61.6%	✗

## Placement Stability

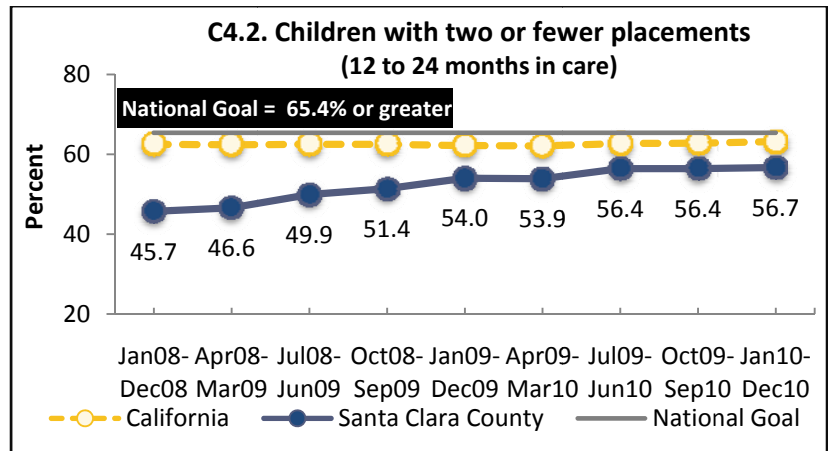


**C4.1.** Of all children served in foster care during a year who were in foster care for at least 8 days but less than 12 months, what percent had two or fewer placement settings?



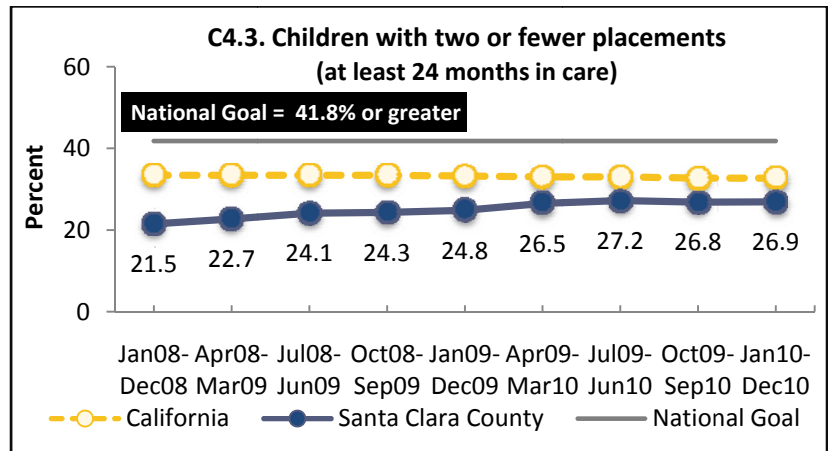
C4.1	National Standard	Last year (Jan09- Dec09)		Current Period (Jan10- Dec10)	
		Rate	Goal met (✓) or not (✗)	Rate	Goal met (✓) or not (✗)
Black	≥ 86.0%	81.1%	✗	85.3%	✗
White	≥ 86.0%	82.8%	✗	92.9%	✓
Hispanic	≥ 86.0%	85.9%	✗	88.6%	✓
Asian/ Pacific Islander	≥ 86.0%	86.3%	✓	86.7%	✓
Native American	≥ 86.0%	100.0%	✓	75.0%	✗
Total	≥ 86.0%	84.8%	✗	88.9%	✓

**C4.2.** Of all children served in foster care during a year who were in foster care for at least 12 months but less than 24 months, what percent had two or fewer placement settings?



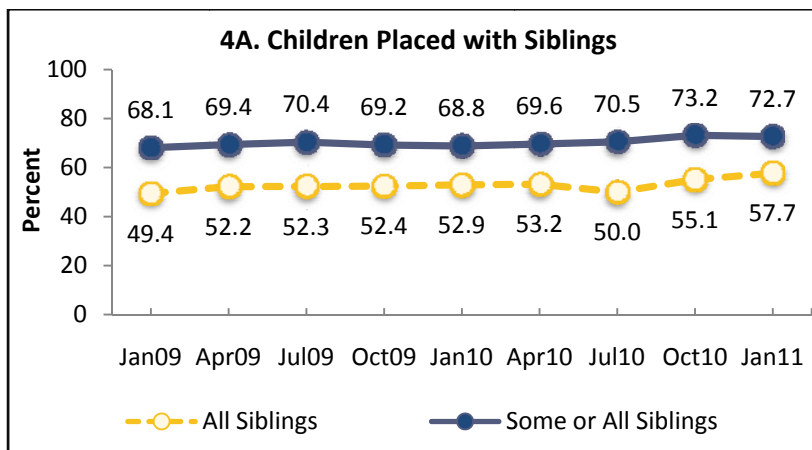
C4.2	National Standard	Last year (Jan09- Dec09)		Current Period (Jan10- Dec10)	
		Rate	Goal met (✓) or not (✗)	Rate	Goal met (✓) or not (✗)
Ethnicity	Rate	Rate	Goal met (✓) or not (✗)	Rate	Goal met (✓) or not (✗)
Black	≥ 65.4%	50.9%	✗	48.4%	✗
White	≥ 65.4%	58.3%	✗	56.5%	✗
Hispanic	≥ 65.4%	53.7%	✗	56.9%	✗
Asian/ Pacific Islander	≥ 65.4%	58.3%	✗	72.7%	✓
Native American	≥ 65.4%	0.0%	✗	0.0%	✗
Total	≥ 65.4%	54.0%	✗	56.7%	✗

**C4.3.** Of all children served in foster care during a year who were in foster care for at least 24 months, what percent had two or fewer placement settings?



C4.3	National Standard	Last year (Jan09- Dec09)		Current Period (Jan10- Dec10)	
		Rate	Goal met (✓) or not (✗)	Rate	Goal met (✓) or not (✗)
Ethnicity	Rate	Rate	Goal met (✓) or not (✗)	Rate	Goal met (✓) or not (✗)
Black	≥ 41.8%	18.6%	✗	22.6%	✗
White	≥ 41.8%	28.9%	✗	30.7%	✗
Hispanic	≥ 41.8%	24.7%	✗	27.0%	✗
Asian/ Pacific Islander	≥ 41.8%	26.7%	✗	28.6%	✗
Native American	≥ 41.8%	20.0%	✗	12.5%	✗
Total	≥ 41.8%	24.8%	✗	26.9%	✗

## Child and Family Well-being

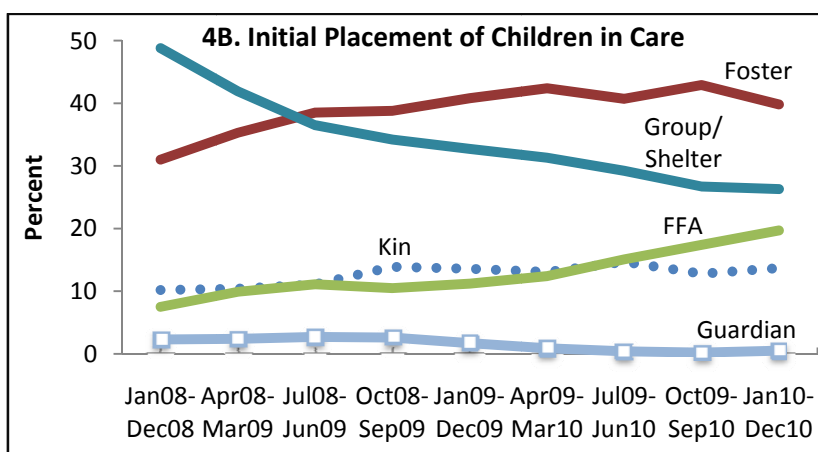


**4A. Children Placed with Some or All Siblings, January 1, 2011**

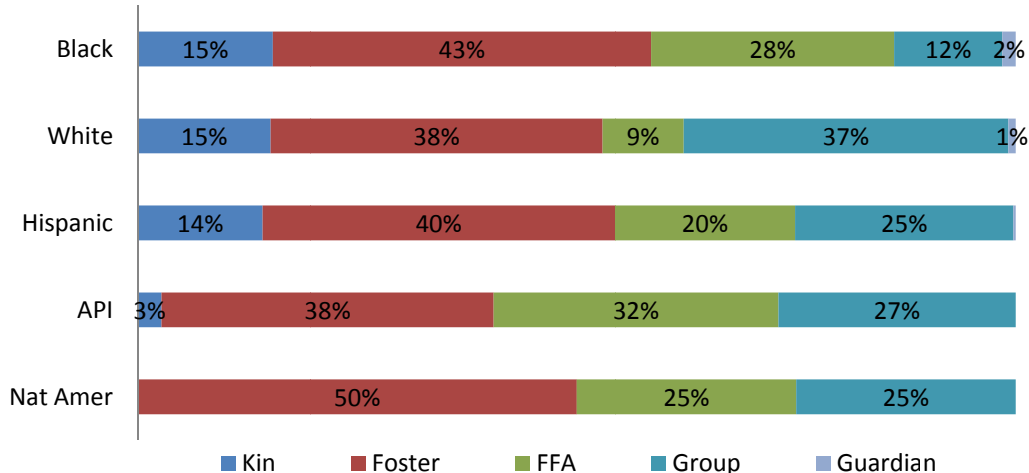
Ethnicity	All Siblings	Some or All Siblings
Black	69.4%	72.6%
White	47.5%	61.3%
Hispanic	59.5%	76.1%
Asian/ Pacific Islander	15.4%	53.8%
Native American	50.0%	50.0%
Total	57.7%	72.7%

**4B. Initial Placement of Children in Care, Jan10- Dec10**

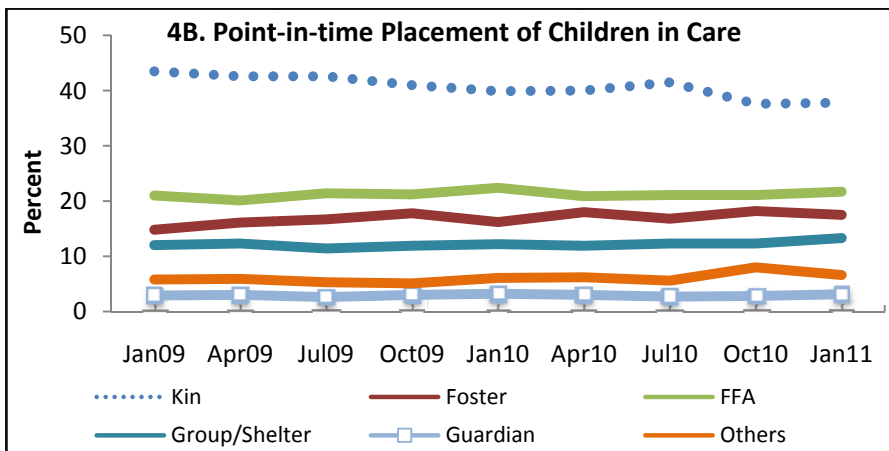
Placement Type	Rate
Kin	13.7%
Foster	39.8%
FFA	19.7%
Group	26.3%
Guardian	0.5%



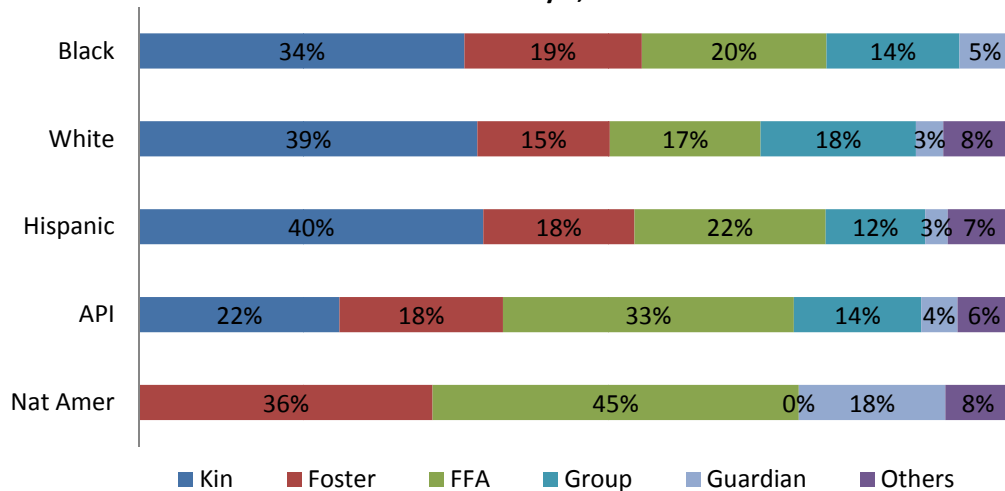
**4B. Initial Placement of Children in Care by Race/Ethnicity  
Jan10- Dec10**



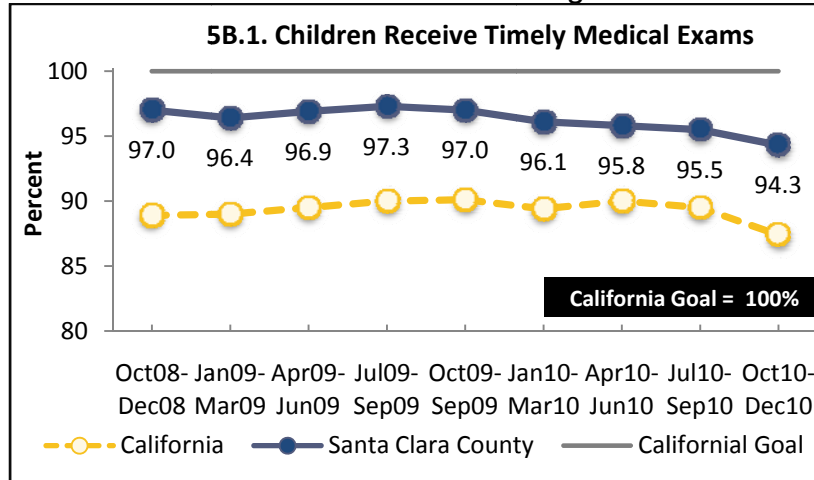
4B. Point-in-time Placement of Children in Care, Jan 1, 2011	
Placement Type	Rate
Kin	37.8%
Foster	17.5%
FFA	21.7%
Group	13.3%
Guardian	3.1%
Others	6.6%



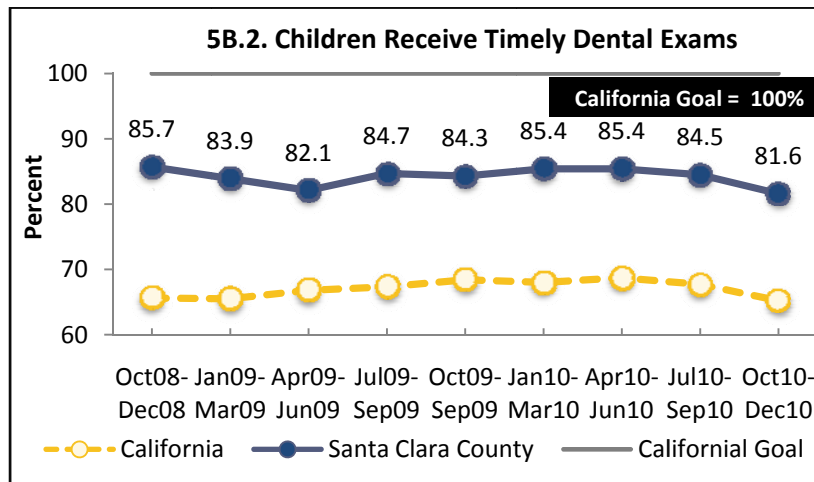
**4B. Point-in-time Placement of Children by Race/Ethnicity  
January 1, 2011**



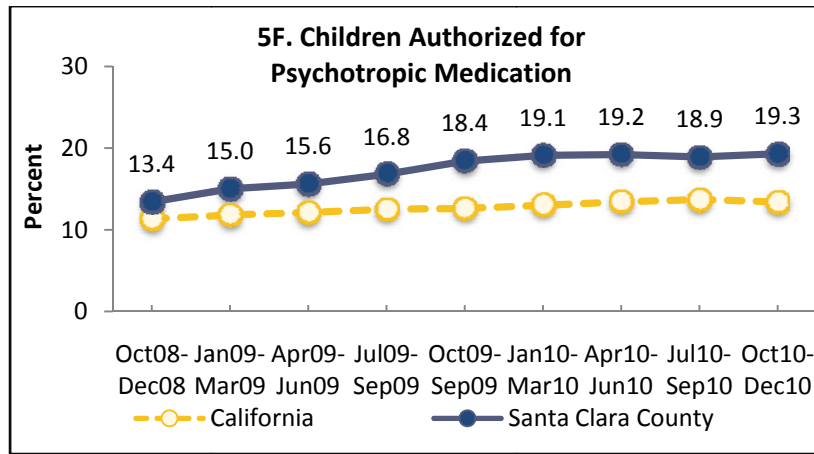
## Child Health Well-being



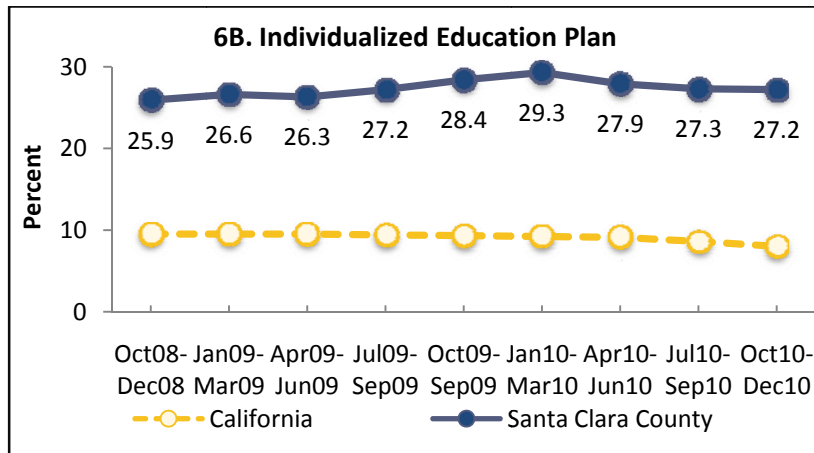
Medical Exams	Black	White	Hispanic	Asian/ Pacific Islander	Native American	Total
Received a timely medical exam	92.5%	91.1%	95.4%	95.5%	90.0%	94.3%
Did not receive a timely medical exam	7.5%	8.9%	4.6%	4.5%	10.0%	5.7%
Total	100.0%	100.0%	100.0%	100.0%	100.0%	100.0%



Dental Exams	Black	White	Hispanic	Asian/ Pacific Islander	Native American	Total
Received a timely dental exam	77.9%	78.5%	82.9%	79.5%	100.0%	81.6%
Did not receive a timely dental exam	22.1%	21.5%	17.1%	20.5%	0.0%	18.4%
Total	100.0%	100.0%	100.0%	100.0%	100.0%	100.0%



Psychotropic Medication	Black	White	Hispanic	Asian/Pacific Islander	Native American	Total
Authorized for psychotropic medications	19.0%	30.4%	16.2%	16.7%	36.4%	19.3%
Not authorized for psychotropic medications	81.0%	69.6%	83.8%	83.3%	63.6%	80.7%
Total	100.0%	100.0%	100.0%	100.0%	100.0%	100.0%



Individualized Education Plan	Black	White	Hispanic	Asian/Pacific Islander	Native American	Total
Have had an IEP	38.5%	30.3%	24.1%	25.0%	60.0%	27.2%
Have never had an IEP	61.5%	69.7%	75.9%	75.0%	40.0%	72.8%
Total	100.0%	100.0%	100.0%	100.0%	100.0%	100.0%