

Child Welfare Services Outcome and Accountability Quarterly Data Report



October 2011

SANTA CLARA COUNTY



SOCIAL SERVICES AGENCY

Prepared by:

Arcel Vazquez Blume

Izi Chan

Evaluation and Planning

Development and Operational Planning

Santa Clara County Social Services Agency

Contact:

Arcel Vazquez Blume

Evaluation and Planning Manager

408-491-6822

arcel.blume@ssa.sccgov.org

EXECUTIVE SUMMARY

The Child Welfare Outcome and Accountability Report provides a quarterly update on progress toward continuous child welfare improvements for the Santa Clara County Department of Family and Children's Services (SCC DFCS). The report presents both Federal and State indicators. Tracking the County's performance on these indicators is important as the State faces potential financial sanctions for failure to demonstrate improvement.¹ The standards for the federal indicators were set according to states' performance in 2004 at the 75 percentile, challenging states to meet or exceed these national standards. In addition to the federal indicators, the California Department of Social Services, UC Berkeley, and State counties continue to revise the methodology for State-specific indicators and continue to add more robust indicators (e.g., placement stability using entry cohorts). The Center for Social Services Research, UCB, which manages the data, is speeding up the reporting, which will allow for more timely data on progress. However, the reader should be aware that some indicators require a longer window of review (e.g., entry cohort indicators).

SUMMARY OF FINDINGS

The present report finds important improvements for several child outcomes and social work performance. Interesting changes are noted in the child welfare participation as a function of race/ethnicity. For instance, while referral, substantiation, and entry rates continue to decline each year, differences emerge across the groups. For example, a post hoc analysis finds that African Ancestry children have a markedly higher referral rate than other children. However, the substantiation rate per 1,000 African Ancestry children is beginning to converge with the group average. The incidence rate per 1,000 children for entries into care have also markedly declined for African Ancestry children but still remains noticeably higher than the group average of 1.5 per 1,000 children at 7.9 per 1,000 children. For Latino children, their referral rate has not changed much, but remains high; however, their incidence rates for both substantiation and entry into care continue to decline.

A notable trend is found for placement stability within 12 months of entry; and, for the first time, placement stability between 12 months and 24 months exceeds the national goal! Additionally, timely family reunifications continue to exceed the national goal. Social workers continue to respond in a timely manner to immediate response referrals and have timely visits with children. More importantly, social workers' child visits are not moderated by children's race or ethnicity. In summary, 12 of 22 indicators with goals either met the goal or show improvement compared to the same period a year prior. Of the Federal indicators, five indicators were met across the following composites: timeliness and permanency of reunification, timely adoptions, and placement stability. Two of the five State indicators were met (i.e., *timely response to immediate referrals*, and *timely social worker visits*). SCC's System Improvement Plan (SIP) uses several State and Federal indicators to track progress on its five overarching goals. These goals and corresponding target indicators are described in the *Introduction* section of the report.

Notable improvements and challenges are highlighted below.

IMPROVEMENT FINDINGS

Child Safety: "Children are first and foremost protected from abuse and neglect."

Social workers continue to respond in a timely manner to immediate response referrals. Performance for this indicator has historically been strong and continues to exceed the County goal of 95 percent at 97.4 percent (see p. 10). The State goal is set at 90 percent.

¹ See ACL 00-25, which references: Department of Health and Human Services, Administration for Children and Families (2000). 45 CFR Parts 1355, 1356 and 1357. *Federal Register*, 65(16), 4020-4093.

Children receive timely visits from their social workers. The timeliness of social worker visits continues to exceed the State goal of 90 percent at 94.4 percent (see p. 11). More importantly, the goal is met for all children regardless of their race or ethnicity. Note that the County goal of 95 percent is not met.

Permanency and Stability: “Children have permanency and stability in their living situations without increasing entry into foster care.”

Timeliness and Permanency of Reunification

Children experience timely reunifications. When following children from first entry, 63.6 percent are reunified within 12 months, markedly exceeding the national goal of 48.4 percent (see C1.3, p. 13); compliance to this goal dates from the period of Jul-Dec 2007. The median time to reunification continues to decline (from 6.8 months in Jan-Dec 2009 to 4.7 months in Jul10-Jun11) and continues to exceed the national goal of 5.4 months or less.

Timeliness of Adoption

Children legally free for adoption experience timely adoptions. For the third quarter period, SCC shows continuous improvement and exceeds the national goal of 53.7 percent for children adopted within 12 months of being legally freed for adoption at 59.3 percent. In the last report (Jul 2011), a post hoc analysis on trend data show that there are two paths to timely adoptions; these appear to be a function of children’s race/ethnicity. Caucasian and Asian/ Pacific Islander children are more likely to have their adoptions finalized within 12 months of being legally free than African Ancestry and Latino children. A closer inspection of the data shows that when the caregiver in the last placement prior to the child exiting foster care due to adoption is a non-relative (presumably the child is placed with the adoptive parent prior to exiting foster care), freed children are either close to exceeding or exceed the national goal of 53.7 percent for finalized adoptions within 12 months (N=96, 63%). However, when the caregiver is a relative, Latino children (N=53, 40%) and African Ancestry children (N=5, 40%) that are freed for adoption are less likely to have their adoptions finalized within 12 months. Caucasian children (N=6, 83%) and API children (N=1, 100%), on the other hand, are far more likely to far exceed the national goal. Thus, one may determine that how family responds to adoptions varies across different race and ethnicity groups that may be a function of their particular norms or values. This may have implications for how social workers help families understand the many legal paths to permanency. This is an area that is being addressed by Santa Clara County’s participation in CAPP and in the work of the Cultural Dialogue Series.

Placement Stability

Children experience more stability in foster care for longer periods of time. For the fourth quarter period, SCC meets the goal for placement stability (C4.1) of 86 percent. Of children entering foster care for 8 days through 12 months, 89.2 percent experience no more than two placements. This significant upward trend in placement stability in the first year of foster care is having a positive effect on placement stability during the second year in care. For the first time, placement stability between 12 months and 24 months meets the national goal of 65.4 percent at 66.8 percent. As mentioned in previous reports, the impact of closing the Children’s Shelter and the subsequent opening of the Receiving, Assessment and Intake Center (RAIC, October 1, 2009), appears to have had a positive impact on children’s stability in foster care.

Child and Family Well-being: “The family relationships and connections of children will be preserved, as appropriate.”

Most children are placed with some or all of their siblings. The majority of children in foster care are placed with some or all of their siblings (70.0%), preserving what are typically very strong family connections (see p. 17). Fifty-four percent of children with siblings are placed with all of their siblings.

This effect is weakest for Asian/Pacific Islander children where only 30.8 percent are placed with all of their siblings.

CHALLENGES

Challenges reflected in this quarterly report include recurrence of maltreatment within 6 months of an initial substantiated allegation, maltreatment in foster care, re-entry into foster care within 12 months of family reunification, timely adoptions, permanency for children in long-term foster care, and placements with relatives.

There continues to be a decline in child safety within 6 months of a substantiated allegation. The April 2011 Child Welfare Quarterly Report showed a relationship between the unemployment rate and CalWORKs on the non-recurrence of maltreatment. Evaluation and Planning is exploring with DFCS reasons that may explain this continuous decline by first focusing on African Ancestry children who have experienced the most noticeable decline in child safety.

This period shows that child maltreatment standards for children in foster care went below the national goal of 99.68 percent or greater, at 99.50 percent. Specifically, the standard was not reached for African Ancestry (98.67%) and Latino (99.56%) children. A main reason that brought down child safety for children in foster care was due to substantiated abuse that affected three African Ancestry siblings in the same placement. Because the reported rates are based on running averages, it is likely that the rate will be out of compliance for the next three reporting periods.

The reduction in the re-entry rate following reunification, which brought SCC in compliance with the national goal for two consecutive quarters, was not sustained. Re-entry within 12 months of reunification occurred for 12.4 percent of children; therefore, not meeting the goal of 9.9 percent or lower. However, as was noted in the July 2011 CW Quarterly Report, a post hoc analysis showed that over the past two years, the re-entry rate for African Ancestry has markedly declined; from a peak of 36.5 percent in Jan-Dec 2008 to 13.6 percent in Jul09-Jun10.

Timely Adoptions continue to be a challenge (see C2). Please refer to the Special Analytic Report on Adoption for a full analysis.

While the rate of permanency for children in long-term foster care is on an upward trend (see C3), SCC is still challenged to reach the Federal goal. It is expected that Santa Clara County's participation in CAPP, review of Peer Quality Case Review findings, and goal setting for the upcoming System Improvement Plan, as well as alignment of all this work into one cohesive Departmental vision, will have further positive impact in the lives of children in long-term foster care.

Fewer children are placed with relatives or non-related extended family members and this is particularly true for African Ancestry (35%) and Asian/ Pacific Islander (21%) children (see p. 22, point-in-time). In the April 2011 Child Welfare Quarterly Report, it was shown that these children, in particular, are experiencing declines in placement with relatives or non-related extended family members. DFCS is in the process of aligning different efforts such as CAPP, Institutional Analysis, Peer Quality Case Review and Self Assessment to identify opportunities to further address these and other related trends and concerns.

Table of Contents

INTRODUCTION	1
SCC Child Welfare Improvement Efforts	1
Structure and Methodology.....	3
SANTA CLARA COUNTY CHILD WELFARE QUARTERLY DASHBOARD	4
HISTORICAL DATA CHARTS AND RACE/ETHNICITY TABLES	7
Participation Rates.....	7
Child Safety	8
Timeliness and Permanency of Reunification.....	11
Timeliness to Adoption	14
Permanency for Children in Long-term Care	17
Placement Stability	19
Child and Family Well-being	21
Child Health Well-being	23

INTRODUCTION

The Child Welfare Outcomes and Accountability Report provides a quarterly update on SCC's progress toward continuous child welfare improvements.^{2 3} The Outcomes and Accountability Report is also a tool to help guide management actions. Through dialogue with DFCS and other Agency stakeholders, the report may help elicit analytic questions to better understand and continue to improve outcomes and performance, as appropriate.

SCC Child Welfare Improvement Efforts

The 2009 System Improvement Plan highlights several goals and strategies to improve child and family outcomes that reflect both internal and State priorities. Concrete and measurable actions will be used to allow supervisors, managers, and administrators to track implementation success and how these relate to children's safety, permanency and stability, and well-being. Five key SIP goals follow (*target indicators follow each priority area*):

1. Improve the safety of children. A three-pronged approach will be used to improve the safety of children coming into contact with child welfare. The first approach has managers reviewing all emotional abuse referrals. About a quarter of all referrals are for emotional abuse, a rate that increased after the disuse of the substantial risk allegation (which the Department now only uses to classify voluntary cases). Secondly, social workers will assess all families using the Comprehensive Assessment Tool (CAT) at each decision point in the life of a case and will use consistent documentation protocols for investigative narratives. In this manner, all families will be looked at through the same comprehensive lens in order to fully capture their individual needs. Thirdly, the Emergency Response and Dependency Intake functions will be redesigned to support the abovementioned approaches.

- S1 No recurrence of maltreatment (see p. 8)

2. Reduce the disproportionate representation of children of color in the foster care system, with a focus on children re-entering care. Reducing disproportionality, particularly of African American children, remains a top priority and major concern for the Agency. In general, across indicators of referral and entry, child safety, permanency and stability, and well-being, African American children are more likely to experience lower outcomes compared to children of other ethnic or racial backgrounds. Two intervention strategies will be implemented to reduce ethnic disproportionality. First, front end strategies will be expanded by contracting with service providers who will offer culturally-specific services in the facilitation of family team meetings and on-demand consultation for specific ethnic populations. The Department will prioritize services for African American families. Second, the Agency will continue to tailor and expand training for managers, supervisors, and staff that promotes cultural sensitivity relating to child protection and well-being. By providing culturally-focused services both internally (e.g., through social workers) and externally (e.g., through contractors), families may be more likely to engage in services thereby improving family reunification outcomes, as well as the sustainability of reunification efforts.

Other tools and resources used to reduce disproportionality include a report developed by the SPHERE Institute that tracks the proportion of children involved in the child welfare system by ethnicity/race at

² State Accountability Act, Assembly Bill (AB) 636, California-Children & Family Services Review, 2001.

³ Administration for Children and Family Services, Department of Health and Human Services (2006). The data indicators, data composites and National standards to be used in the Child and Family Services Reviews. Federal Register (71)109, 32969-32987.

key child welfare decision points. Managers use this quarterly report to watch for significant variations that may relate to important changes in practice. Finally, the Unified Children of Color Task Force's annual plan has proven effective at addressing and uncovering areas that need further attention. The task force is presently operationalizing and implementing its 2009 plan, which will rely on SPHERE's tracking report to monitor and assess the impact of key program elements.

- First entry into care (see p. 7)
- C1.4 Re-entry following reunification (see p. 13)

3. Increase child and family involvement in case planning. Families and children who are engaged in developing their case plans are more likely to participate and complete services. Engagement in case planning may be a vehicle by which children experience greater stability while in care and are then successfully reunified with their families. To this end, DFCS will enhance training to include creative ways to engage children and their families in case planning and expand outreach efforts to have all key family members participate in case planning. All children over the age of 10 years, incarcerated parents, and less-involved fathers and mothers will be engaged to improve their participation in case planning.

- C1.3 Reunification, entry cohort (see p. 12)
- C4.1 Placement stability, 8 days to 12 months in care (see p. 19)

4. Increase timeliness of adoptions. Concurrent plans help identify the best placement option while children are in foster care. Later, if reunification is not possible, the concurrent home is more likely to turn into the child's permanent home, which would occur preferably through adoption or guardianship. In some instances, the concurrent caregiver may not be able to formally adopt or become the guardian but may nonetheless continue to be the permanent caregiver of the child. To increase the number of children placed in concurrent homes, social workers will develop the alternative placement plan required by concurrent planning for all children in out-of-home care within 30 days of their first placement. This will entail identifying potential caregivers who can serve as the permanent caregiver for the child when if reunification efforts are not successful.

- C2.3 Adoption within 12 months of being in care for 17 months or longer (see p. 15)
- C2.5 Adoption within 12 months of becoming legally free for adoption (see p. 16)

5. Ensure that all children have timely medical and dental services and, when needed, educational services and supports. The State in partnership with UC Berkeley tracks timely completion of medical and dental exams and children's need for individualized education plans (IEP). Santa Clara County conducts annual data clean up to ensure the accuracy of the education information. The Department, in partnership with CHDP nurses, is developing sustainable tracking mechanisms for medical and dental information and troubleshooting other service related challenges, such as securing providers and getting children and youths timely appointments.

- 5B Timely Medical Exams
- 5B Timely Dental Exams
- 6B Individualized Education Plan

Structure and Methodology

To report on child welfare outcomes and performance, the report is divided into two sections:

In the first section, the Santa Clara County Child Welfare Quarterly Dashboard presents trend performance data for Federal and State indicators with goals. To gauge performance over time, three presentations are made available. First, a trend chart depicts actual performance set against the goal. Secondly, actual performance is presented in a table format across time. Thirdly, relative performance to the goal is provided across time and is color coded to quickly assess distance from actual performance to the goal. When the goal is achieved or exceeded, the corresponding cell is shaded light green with a bright green circle in the center. When the goal is within 90 percent of the goal, the corresponding cell is shaded light yellow with an orange diamond in the center. Finally, when the percent achieved is less than 90 percent, the corresponding cell is shaded light gray with a bright red square in the center.

The second section shows trend charts that reviews SCC and California trend lines. A table shows improvement by race/ethnicity by comparison current performance against the same period, a year prior.

Three main methods are used to report on child welfare outcomes and performance. First, entry cohort indicators assess *all* children's experiences longitudinally. This method provides a more comprehensive understanding of children's experiences in the child welfare system. Second, exit cohort indicators assess children's experiences as they exit the child welfare system. Third, median time is used to assess the time that it takes to reunification or adoption.

To evaluate performance:

- All federal indicators/composites are compared against national standards or goals.
- Present performance is compared to last year's performance.
- Select charts compare SCC against Statewide performance.⁴

Data used in the present report was provided by the Center for Social Sciences Research, UC Berkeley.⁵

⁴ Caution is advised for indicators or descriptive categories with statistically small numbers (e.g., maltreatment in foster care, Native Americans receiving child welfare services).

⁵ To learn more about California child welfare performance data, visit <http://cssr.berkeley.edu/CWSCMSreports>.

SANTA CLARA COUNTY CHILD WELFARE QUARTERLY DASHBOARD

Child Safety, Permanency and Stability Indicators with Standards

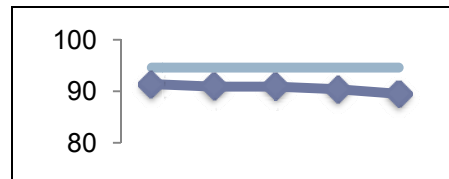
October 2011 Report

Legend	abbreviations	EG = Equal or Greater than	EL = Equal or Less than	LT = Less than
	level achieved	● GOAL ACHIEVED	◆ Goal achieved EG 90 %	■ Goal achieved LT 90%

Child Safety

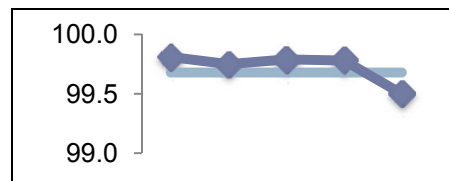
S1. Absence of recurrence of maltreatment
Goal EG 94.6 / Performance
Relative performance to goal

Jul09-Dec09	Oct09-Mar10	Jan10-Jun10	Apr10-Sep10	Jul10-Dec10
91.4	90.9	90.9	90.4	89.5
0.97	0.96	0.96	0.96	0.95
◆	◆	◆	◆	◆



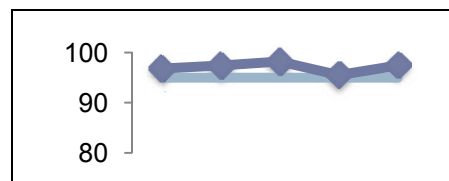
S2. Absence of abuse in foster care
Goal EG 99.7 / Performance
Relative performance to goal

Jul09-Jun10	Oct09-Sep10	Jan10-Dec10	Apr10-Mar11	Jul10-Jun11
99.8	99.8	99.8	99.8	99.5
1.00	1.00	1.00	1.00	1.00
●	●	●	●	●



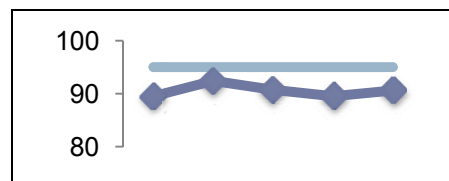
2B. Timely response to immediate response referrals
Goal EG 95.0 / Performance
Relative performance to goal

Apr10-Jun10	Jul10-Sep10	Oct10-Dec10	Jan11-Mar11	Apr11-Jun11
96.8	97.4	98.2	95.5	97.4
1.02	1.03	1.03	1.01	1.03
●	●	●	●	●



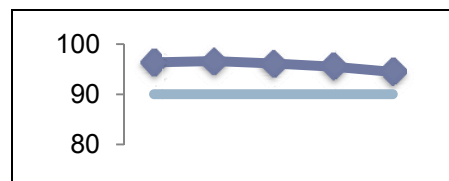
2B. Timely response to 10-day referrals
Goal EG 95.0 / Performance
Relative performance to goal

Apr10-Jun10	Jul10-Sep10	Oct10-Dec10	Jan11-Mar11	Apr11-Jun11
89.5	92.4	90.7	89.5	90.6
0.94	0.97	0.95	0.94	0.95
◆	◆	◆	◆	◆



2C. Timely social worker visits
Goal EG 90.0 / Performance
Relative performance to goal

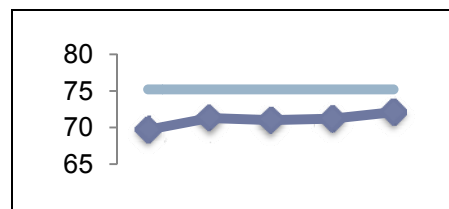
Apr10-Jun10	Jul10-Sep10	Oct10-Dec10	Jan11-Mar11	Apr11-Jun11
96.3	96.6	96.1	95.5	94.4
1.07	1.07	1.07	1.06	1.05
●	●	●	●	●



Timeliness of Family Reunification and Permanency of Reunification

C1.1. Reunification within 12 months for children exiting care
Goal EG 75.2 / Performance
Relative performance to goal

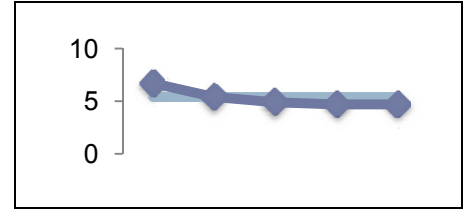
Jul09-Jun10	Oct09-Sep10	Jan10-Dec10	Apr10-Mar11	Jul10-Jun11
69.7	71.3	71.0	71.2	72.1
0.93	0.95	0.94	0.95	0.96
◆	◆	◆	◆	◆



C1.2. Median time to reunification

Goal EL 5.4 months/
Performance
Relative performance to goal

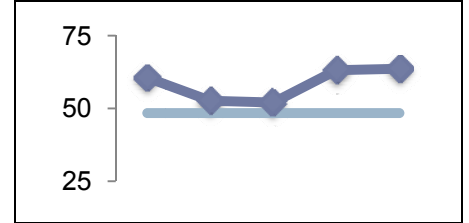
Jul09-Jun10	Oct09-Sep10	Jan10-Dec10	Apr10-Mar11	Jul10-Jun11
6.7	5.4	4.9	4.7	4.7
0.81	1.00	1.10	1.15	1.15
■	●	●	●	●



C1.3. Reunification within 12 months for a cohort of children entering care

Goal EG 48.4 / Performance
Relative performance to goal

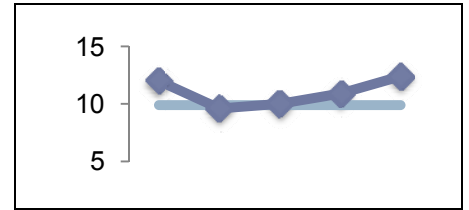
Jan09-Jun09	Apr09-Sep09	Jul09-Dec09	Oct09-Mar10	Jan10-Jun10
60.5	52.6	52.0	63.1	63.6
1.25	1.09	1.07	1.30	1.31
●	●	●	●	●



C1.4. Re-entry into foster care within 12 months from reunification

Goal EL 9.9 / Performance
Relative performance to goal

Jul08-Jun09	Oct08-Sep09	Jan09-Dec09	Apr09-Mar10	Jul09-Jun10
12.0	9.6	10.0	10.9	12.4
0.83	1.03	0.99	0.91	0.80
■	●	◆	◆	■

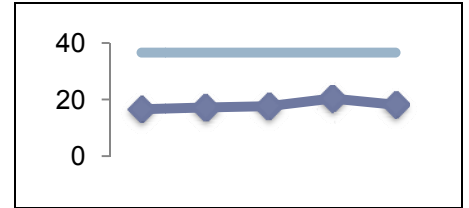


Timeliness to Adoption

C2.1. Adoption within 24 months for children exiting to adoption

Goal EG 36.6 / Performance
Relative performance to goal

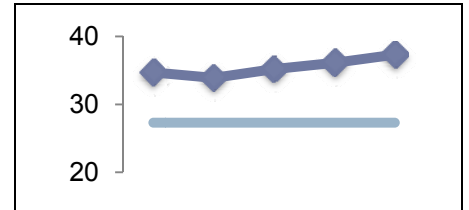
Jul09-Jun10	Oct09-Sep10	Jan10-Dec10	Apr10-Mar11	Jul10-Jun11
16.6	17.2	17.7	20.4	18.2
0.45	0.47	0.48	0.56	0.50
■	■	■	■	■



C2.2. Median time to adoption

Goal EL 27.3 months / Performance
Relative performance to goal

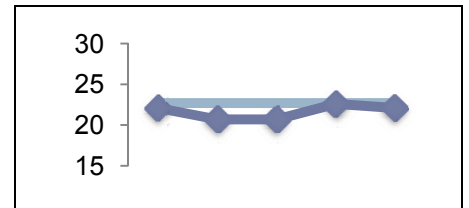
Jul09-Jun10	Oct09-Sep10	Jan10-Dec10	Apr10-Mar11	Jul10-Jun11
34.7	33.9	35.2	36.1	37.3
0.79	0.81	0.78	0.76	0.73
■	■	■	■	■



C2.3. Adoption within 12 months for children in care 17 months or longer

Goal EG 22.7 / Performance
Relative performance to goal

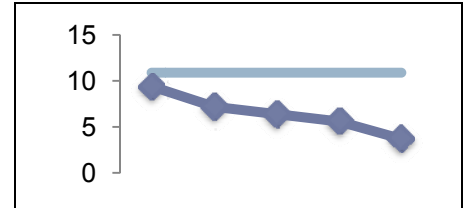
Jul09-Jun10	Oct09-Sep10	Jan10-Dec10	Apr10-Mar11	Jul10-Jun11
22.1	20.7	20.7	22.6	22.1
0.97	0.91	0.91	1.00	0.97
◆	◆	◆	●	◆



C2.4. Legally free within 6 months for children in care 17 months or longer

Goal EG 10.9 / Performance
Relative performance to goal

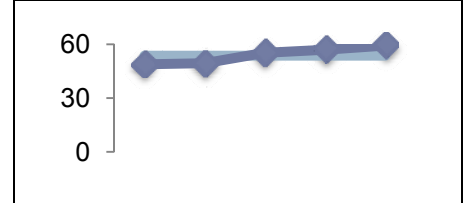
Jul09-Dec09	Oct09-Mar10	Jan10-Jun10	Apr10-Sep10	Jul10-Dec10
9.4	7.2	6.4	5.6	3.7
0.86	0.66	0.59	0.51	0.34
■	■	■	■	■



C2.5. Adoption within 12 months after being legally freed

Goal EG 53.7 / Performance
Relative performance to goal

Jul08-Jun09	Oct08-Sep09	Jan09-Dec09	Apr09-Mar10	Jul09-Jun10
48.8	49.4	55.3	57.0	59.3
0.91	0.92	1.03	1.06	1.10
◆	◆	●	●	●

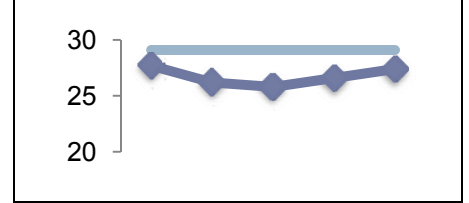


Permanency for Children in Long-term Care

C3.1. Exits to permanency for children in care 24 months or longer

Goal EG 29.1 / Performance
Relative performance to goal

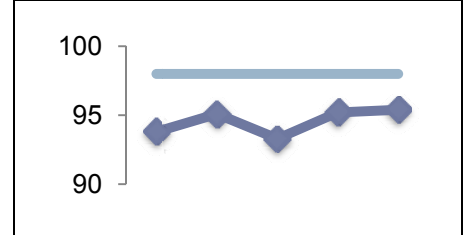
Jul09-Jun10	Oct09-Sep10	Jan10-Dec10	Apr10-Mar11	Jul10-Jun11
27.7	26.2	25.8	26.6	27.4
0.95	0.90	0.89	0.91	0.94
◆	◆	■	◆	◆



C3.2. Exits to permanency for children exiting foster care and who were legally free for adoption

Goal EG 98.0 / Performance
Relative performance to goal

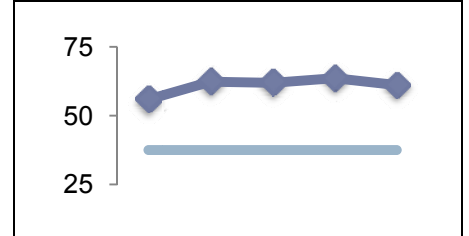
Jul09-Jun10	Oct09-Sep10	Jan10-Dec10	Apr10-Mar11	Jul10-Jun11
93.8	95.1	93.3	95.2	95.4
0.96	0.97	0.95	0.97	0.97
◆	◆	◆	◆	◆



C3.3. Exits due to emancipation or age of majority and in care 3 years or longer

Goal EL 37.5 / Performance
Relative performance to goal

Jul09-Jun10	Oct09-Sep10	Jan10-Dec10	Apr10-Mar11	Jul10-Jun11
55.9	62.3	61.9	63.6	61.1
0.67	0.60	0.61	0.59	0.61
■	■	■	■	■

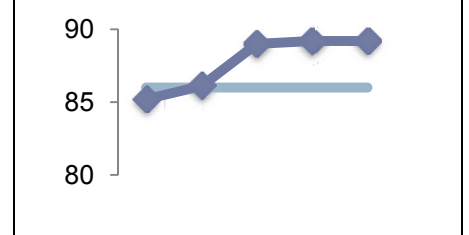


Placement Stability

C4.1. Children with two or fewer placements, in care between 8 days and 12 months

Goal EG 86.0 / Performance
Relative performance to goal

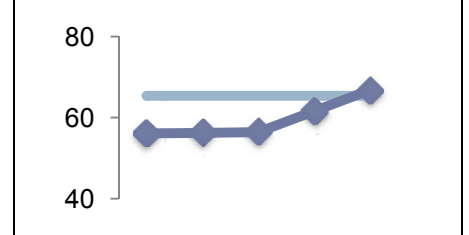
Jul09-Jun10	Oct09-Sep10	Jan10-Dec10	Apr10-Mar11	Jul10-Jun11
85.2	86.1	89.0	89.2	89.2
0.99	1.00	1.03	1.04	1.04
◆	●	●	●	●



C4.2. Children with two or fewer placements in the life of their case, in care between 12 months and 24 months

Goal EG 65.4 / Performance
Relative performance to goal

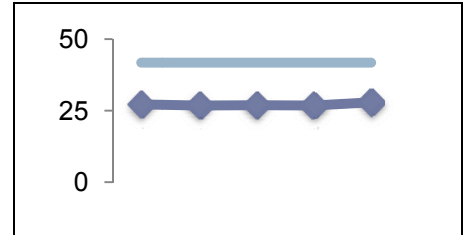
Jul09-Jun10	Oct09-Sep10	Jan10-Dec10	Apr10-Mar11	Jul10-Jun11
56.1	56.2	56.4	61.6	66.8
0.86	0.86	0.86	0.94	1.02
■	■	■	◆	●



C4.3. Children with two or fewer placements in the life of their case, in care at least 24 months

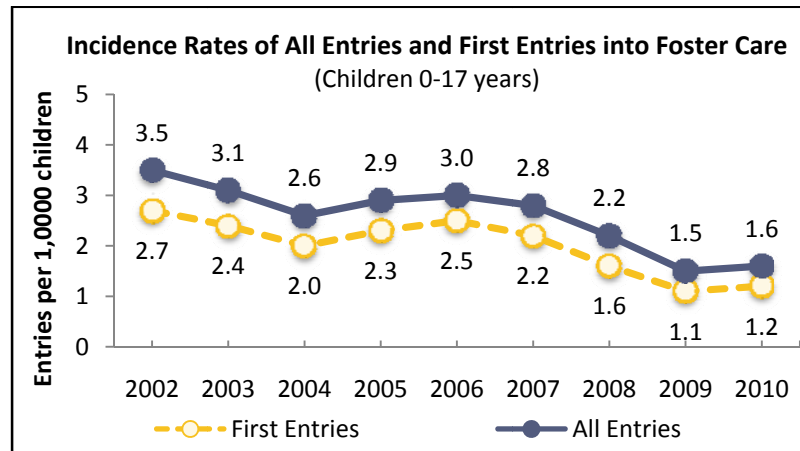
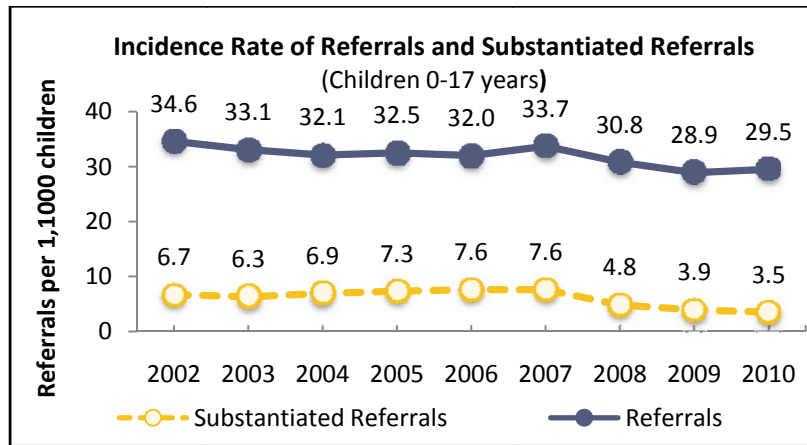
Goal EG 41.8 / Performance
Relative performance to goal

Jul09-Jun10	Oct09-Sep10	Jan10-Dec10	Apr10-Mar11	Jul10-Jun11
27.2	26.8	26.9	26.8	27.9
0.65	0.64	0.64	0.64	0.67
■	■	■	■	■



HISTORICAL DATA CHARTS AND RACE/ETHNICITY TABLES

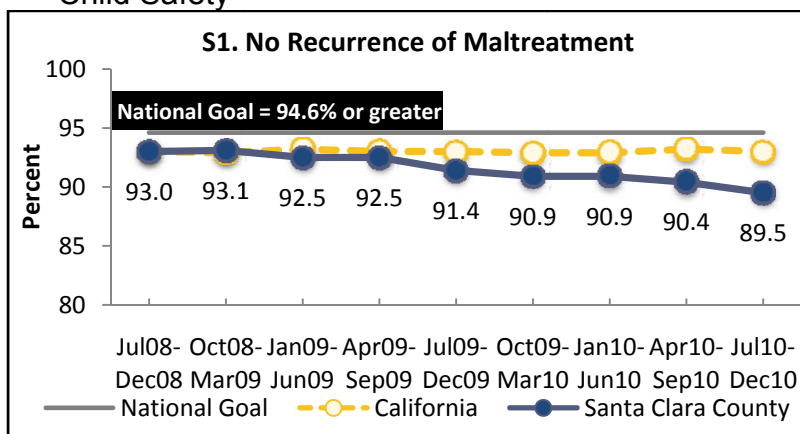
Participation Rates



Incidence Rate for Referrals, Substantiations and Foster Care Entries per 1,000 Children (CY 2010)			
Ethnicity	Referrals	Substantiated Referrals	All Entries
Black	121.5	12.9	8.4
White	24.6	2.5	1.2
Hispanic	46.6	6.1	2.7
Asian/ Pacific Islander	10.9	1.1	0.4
Native American	51.7	8.6	4.3
Total	29.5	3.5	1.6

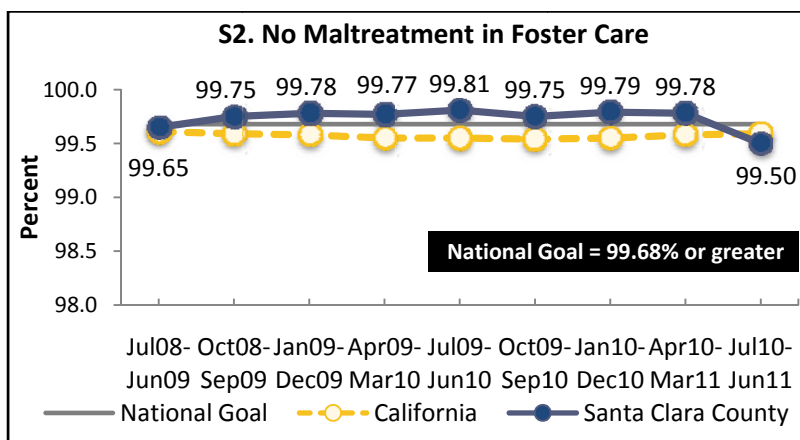
Child Safety

S1. Of all children who were victims of a substantiated or indicated maltreatment allegation during the first 6 months of a year, what percent were not victims of another substantiated or indicated maltreatment allegation within the next 6-month period?



S1	National Standard	Last Year (Jul09- Dec09)		Current Period (Jul10- Dec10)	
Ethnicity	Rate	Rate	Goal met (✓) or not (✗)	Rate	Goal met (✓) or not (✗)
Black	≥ 94.6%	100.0%	✓	91.3%	✗
White	≥ 94.6%	92.5%	✗	90.8%	✗
Hispanic	≥ 94.6%	89.2%	✗	88.2%	✗
Asian/ Pacific Islander	≥ 94.6%	96.7%	✓	96.5%	✓
Native American	≥ 94.6%	100.0%	✓	50.0%	✗
Total	≥ 94.6%	91.4%	✗	89.5%	✗

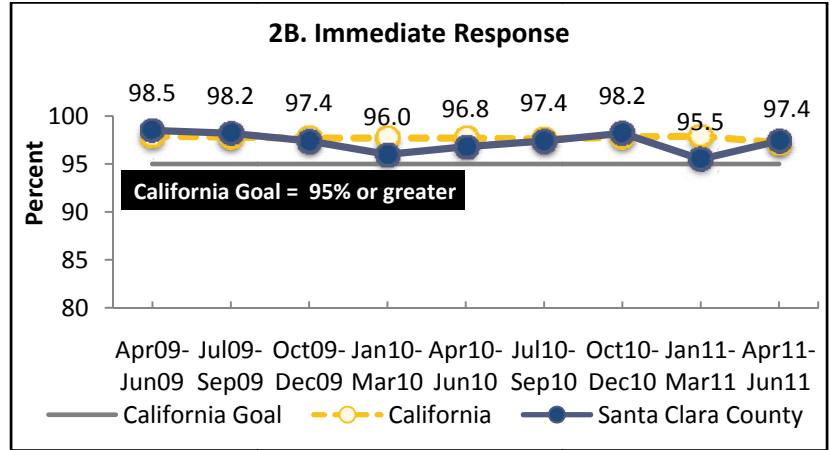
S2. Of all children served in foster care during the year, what percent were not victims of a substantiated maltreatment allegation by a foster parent or facility staff member?



S2	National Standard	Last Year (Jul09- Jun10)		Current Period (Jul10- Jun11)	
Ethnicity	Rate	Rate	Goal met (✓) or not (✗)	Rate	Goal met (✓) or not (✗)
Black	≥ 99.68%	100.00%	✓	98.67%	✗
White	≥ 99.68%	99.74%	✓	99.69%	✓
Hispanic	≥ 99.68%	99.78%	✓	99.56%	✗
Asian/ Pacific Islander	≥ 99.68%	100.00%	✓	100.00%	✓
Native American	≥ 99.68%	100.00%	✓	100.00%	✓
Total	≥ 99.68%	99.81%	✓	99.50%	✗

2B. State Outcome indicator:

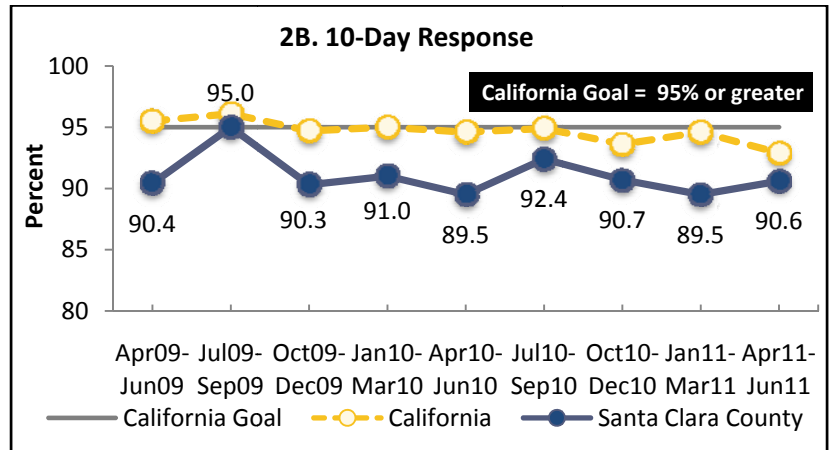
Percent of immediate response referrals with a timely response



2B. Immediate Response	California Goal	Last Year (Apr10- Jun10)		Current Period (Apr11- Jun11)	
		Rate	Goal met (✓) or not (✗)	Rate	Goal met (✓) or not (✗)
Black	≥ 95%	92.9%	✗	97.7%	✓
White	≥ 95%	95.8%	✓	97.6%	✓
Hispanic	≥ 95%	97.5%	✓	97.5%	✓
Asian/ Pacific Islander	≥ 95%	98.1%	✓	95.7%	✓
Native American	≥ 95%	100.0%	✓	100.0%	✓
Total	≥ 95%	96.8%	✓	97.4%	✓

2B. State Outcome indicator:

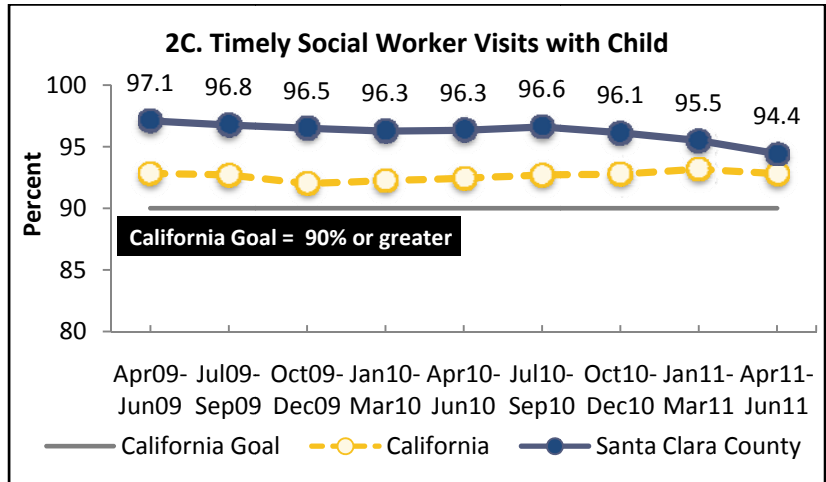
Percent of 10-day referrals with a timely response



2B. 10-Day Response	California Goal	Last Year (Apr10- Jun10)		Current Period (Apr11- Jun11)	
		Rate	Goal met (✓) or not (✗)	Rate	Goal met (✓) or not (✗)
Black	≥ 95%	76.6%	✗	82.6%	✗
White	≥ 95%	92.3%	✗	93.3%	✗
Hispanic	≥ 95%	89.3%	✗	90.8%	✗
Asian/ Pacific Islander	≥ 95%	94.5%	✗	93.8%	✗
Native American	≥ 95%	100.0%	✓	71.4%	✗
Total	≥ 95%	89.5%	✗	90.6%	✗

2C. State Outcome indicator:

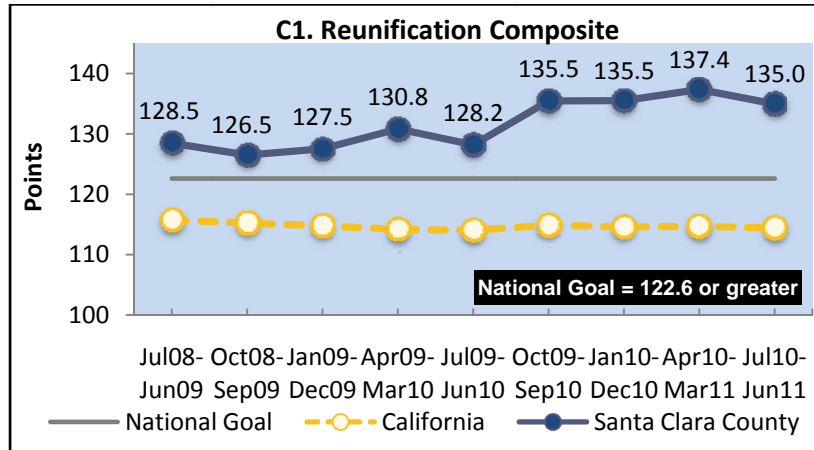
Percent of timely social worker visits with child.



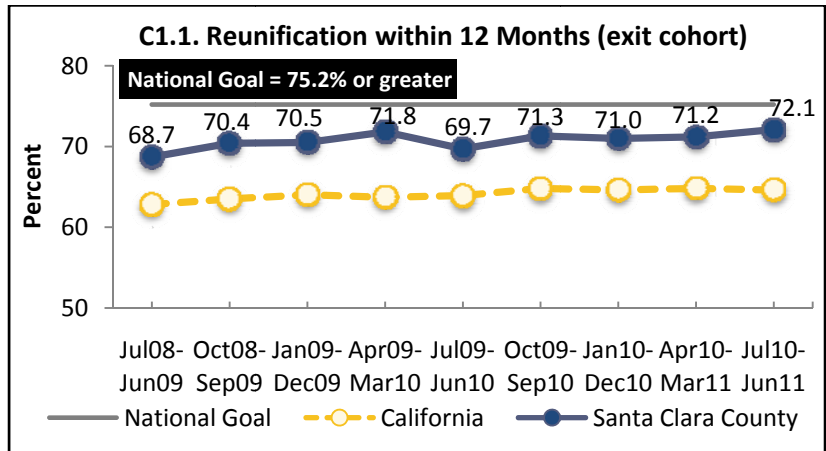
2C	California Goal	Last Year (Apr10- Jun10)		Current Period (Apr11- Jun11)	
		Rate	Goal met (✓) or not (✗)	Rate	Goal met (✓) or not (✗)
Black	≥ 90%	96.5%	✓	93.7%	✓
White	≥ 90%	95.8%	✓	93.5%	✓
Hispanic	≥ 90%	96.3%	✓	94.6%	✓
Asian/ Pacific Islander	≥ 90%	94.5%	✓	94.1%	✓
Native American	≥ 90%	95.3%	✓	93.3%	✓
Total	≥ 90%	96.1%	✓	94.3%	✓

(Note: Due to a small number of children with missing ethnicity coding, the result of the ethnicity table is slightly different from the trend data in the chart above.)

Timeliness and Permanency of Reunification

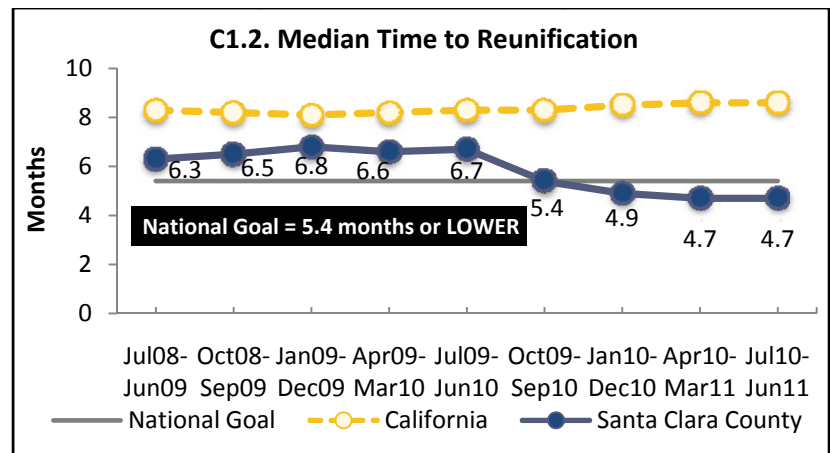


C1.1. Of all children discharged from foster care to reunification in the year who had been in foster care for 8 days or longer, what percent were reunified in less than 12 months from the date of the latest removal from home?



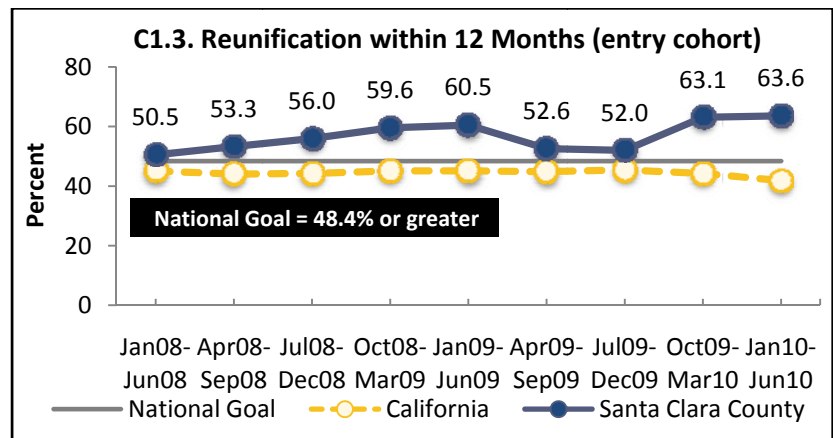
C1.1	National Standard	Last Year (Jul09- Jun10)		Current Period (Jul10- Jun11)	
		Rate	Goal met (✓) or not (✗)	Rate	Goal met (✓) or not (✗)
Black	≥ 75.2%	76.5%	✓	82.4%	✓
White	≥ 75.2%	73.2%	✗	69.0%	✗
Hispanic	≥ 75.2%	65.5%	✗	71.7%	✗
Asian/ Pacific Islander	≥ 75.2%	82.5%	✓	75.0%	✗
Native American	≥ 75.2%	33.3%	✗	NA	NA
Total	≥ 75.2%	69.7%	✗	72.1%	✗

C1.2. Of all children in foster care for 8 days or longer discharged to reunification during the year, what was the median length of stay (in months) from the date of latest removal from home until the date of discharge to reunification?



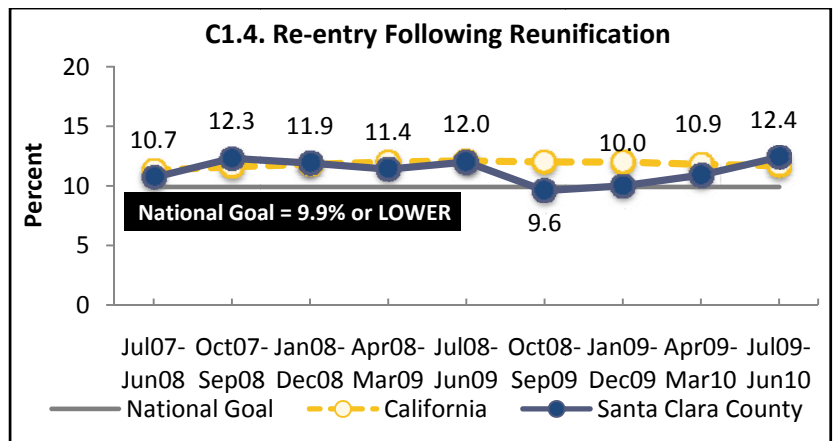
C1.2	National Standard	Last Year (Jul09- Jun10)		Current Period (Jul10- Jun11)	
		Median Months	Goal met (✓) or not (✗)	Median Months	Goal met (✓) or not (✗)
Ethnicity	Month				
Black	≤ 5.4	6.7	✗	4.9	✓
White	≤ 5.4	4.3	✓	2.5	✓
Hispanic	≤ 5.4	7.7	✗	5.1	✓
Asian/ Pacific Islander	≤ 5.4	2.7	✓	4.0	✓
Native American	≤ 5.4	17.9	✗	26.3	✗
Total	≤ 5.4	6.7	✗	4.7	✓

C1.3. Of all children entering foster care for the first time in a 6-month period, and who remained in foster care for 8 days or longer, what percent were discharged from foster care to reunification in less than 12 months from the date of latest removal from home?



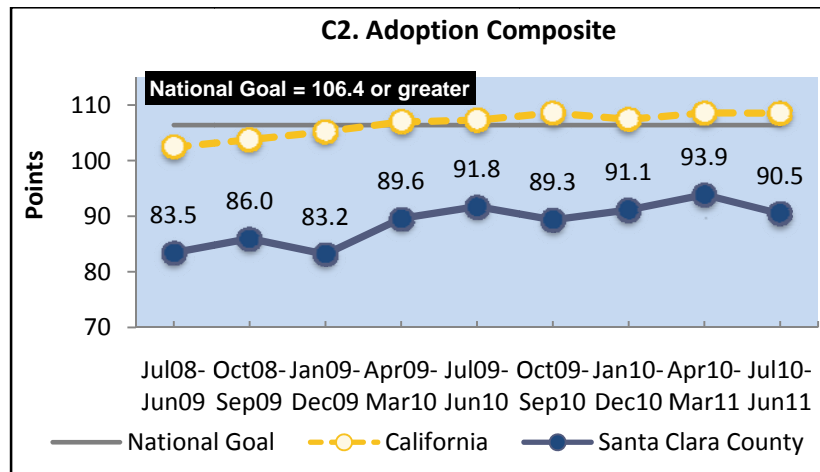
C1.3	National Standard	Last Year (Jan09- Jun09)		Current Period (Jan10- Jun10)	
		Rate	Goal met (✓) or not (✗)	Rate	Goal met (✓) or not (✗)
Ethnicity	Rate				
Black	≥ 48.4%	76.5%	✓	72.7%	✓
White	≥ 48.4%	47.2%	✗	80.5%	✓
Hispanic	≥ 48.4%	58.5%	✓	53.8%	✓
Asian/ Pacific Islander	≥ 48.4%	75.0%	✓	78.3%	✓
Native American	≥ 48.4%	NA	NA	50.0%	✓
Total	≥ 48.4%	60.5%	✓	63.6%	✓

C1.4. Of all children discharged from foster care to reunification during the year, what percent reentered foster care in less than 12 months from the date of discharge?

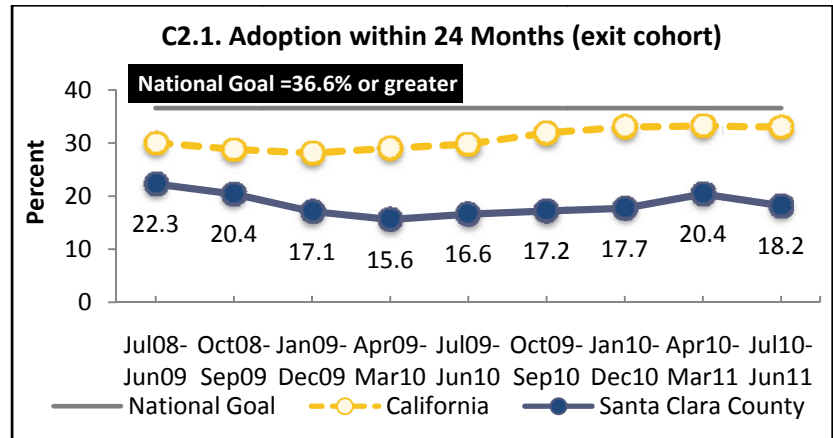


C1.4	National Standard	Last Year (Jul08- Jun09)		Current Period (Jul09- Jun10)	
		Rate	Goal met (✓) or not (✗)	Rate	Goal met (✓) or not (✗)
Ethnicity	Rate	Rate	Goal met (✓) or not (✗)	Rate	Goal met (✓) or not (✗)
Black	≤ 9.9%	28.6%	✗	13.6%	✗
White	≤ 9.9%	12.6%	✗	13.0%	✗
Hispanic	≤ 9.9%	10.3%	✗	13.2%	✗
Asian/ Pacific Islander	≤ 9.9%	2.0%	✓	3.7%	✓
Native American	≤ 9.9%	NA	NA	33.3%	✗
Total	≤ 9.9%	12.0%	✗	12.4%	✗

Timeliness to Adoption

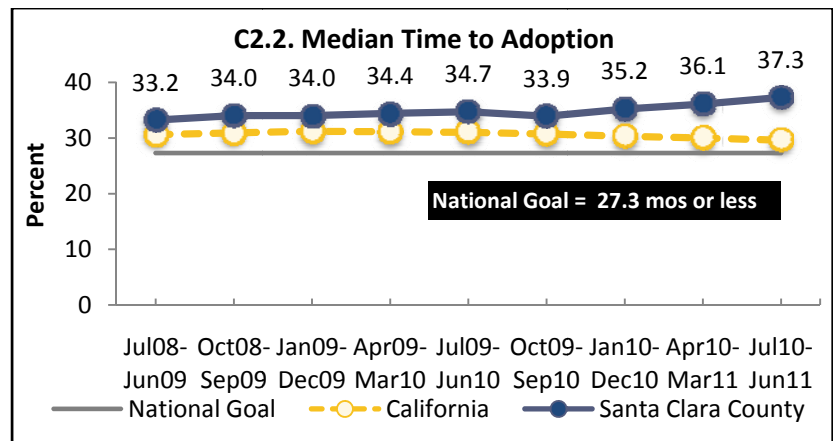


C2.1. Of all children who were discharged from foster care to a finalized adoption during a year, what percent were discharged in less than 24 months from the date of the latest removal from home?



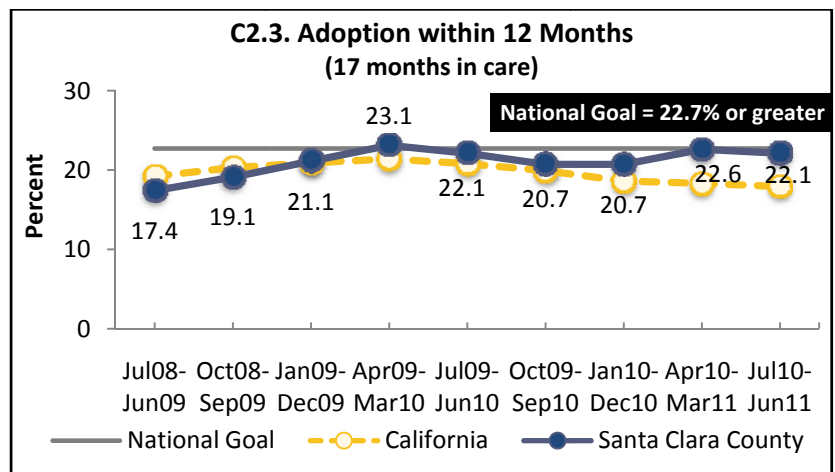
C2.1	National Standard	Last Year (Jul09- Jun10)		Current Period (Jul10- Jun11)	
		Rate	Goal met (✓) or not (✗)	Rate	Goal met (✓) or not (✗)
Black	≥ 36.6%	15.8%	✗	26.7%	✗
White	≥ 36.6%	21.1%	✗	39.1%	✓
Hispanic	≥ 36.6%	14.6%	✗	10.7%	✗
Asian/ Pacific Islander	≥ 36.6%	33.3%	✗	66.7%	✓
Native American	≥ 36.6%	NA	NA	100.0%	✓
Total	≥ 36.6%	16.6%	✗	18.2%	✗

C2.2. Of all children who were discharged from foster care to a finalized adoption during the year, what was the median length of stay in foster care in months from the date of latest removal from home to the date of discharge to adoption?



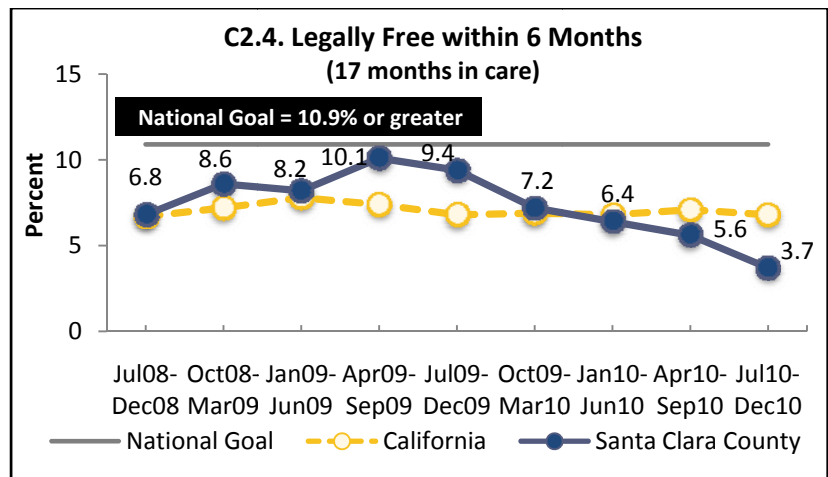
C2.2	National Standard	Last Year (Jul09- Jun10)		Current Period (Jul10- Jun11)	
Ethnicity	Month	Median Months	Goal met (✓) or not (✗)	Median Months	Goal met (✓) or not (✗)
Black	≤ 27.3	42.5	✗	31.9	✗
White	≤ 27.3	34.7	✗	28.1	✗
Hispanic	≤ 27.3	35.2	✗	41.3	✗
Asian/ Pacific Islander	≤ 27.3	27.9	✗	19.4	✓
Native American	≤ 27.3	NA	NA	12.2	✓
Total	≤ 27.3	34.7	✗	37.3	✗

C2.3. Of all children in foster care for 17 continuous months or longer on the first day of the year, what percent were discharged to a finalized adoption by the last day of the year?



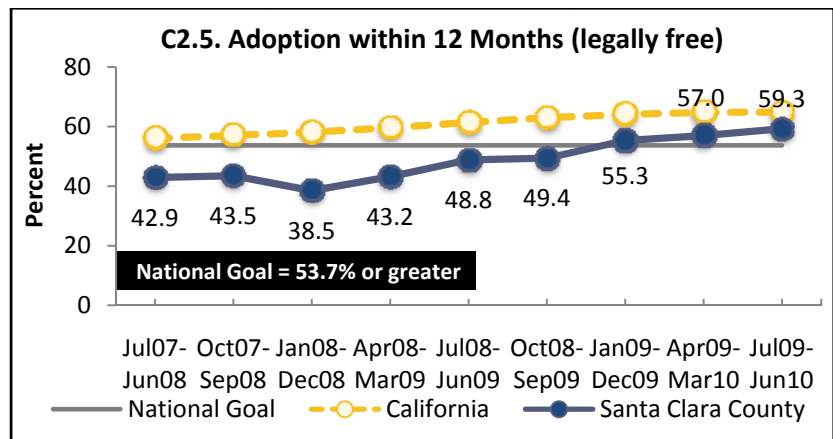
C2.3	National Standard	Last Year (Jul09- Jun10)		Current Period (Jul10- Jun11)	
Ethnicity	Rate	Rate	Goal met (✓) or not (✗)	Rate	Goal met (✓) or not (✗)
Black	≥ 22.7%	20.5%	✗	13.6%	✗
White	≥ 22.7%	24.4%	✓	14.6%	✗
Hispanic	≥ 22.7%	22.9%	✓	27.9%	✓
Asian/ Pacific Islander	≥ 22.7%	10.8%	✗	3.4%	✗
Native American	≥ 22.7%	NA	NA	NA	NA
Total	≥ 22.7%	22.1%	✗	22.1%	✗

C2.4. Of all children in foster care for 17 continuous months or longer and not legally free for adoption on the first day of the year, what percent became legally free within the next 6 months?



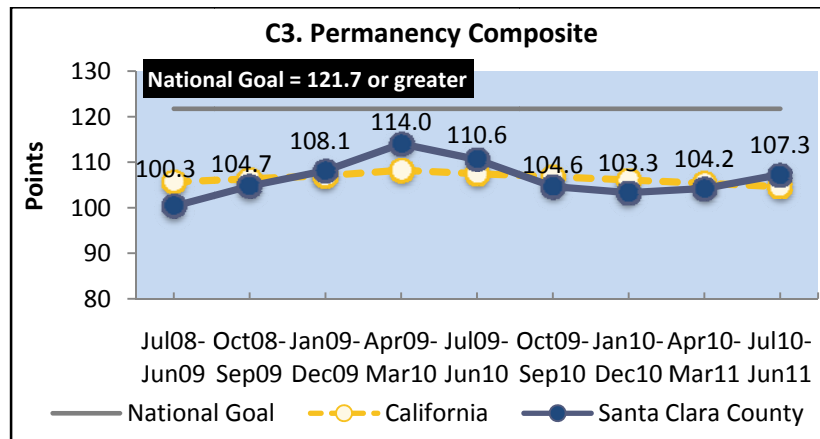
C2.4	National Standard	Last Year (Jul09- Dec09)		Current Period (Jul10- Dec10)	
		Rate	Goal met (✓) or not (✗)	Rate	Goal met (✓) or not (✗)
Ethnicity	Rate	Rate	Goal met (✓) or not (✗)	Rate	Goal met (✓) or not (✗)
Black	≥ 10.9%	3.2%	✗	6.5%	✗
White	≥ 10.9%	8.2%	✗	5.6%	✗
Hispanic	≥ 10.9%	12.1%	✓	2.9%	✗
Asian/ Pacific Islander	≥ 10.9%	NA	NA	NA	NA
Native American	≥ 10.9%	NA	NA	NA	NA
Total	≥ 10.9%	9.4%	✗	3.7%	✗

C2.5. Of all children in foster care who became legally free for adoption during the year, what percent were then discharged to a finalized adoption in less than 12 months?

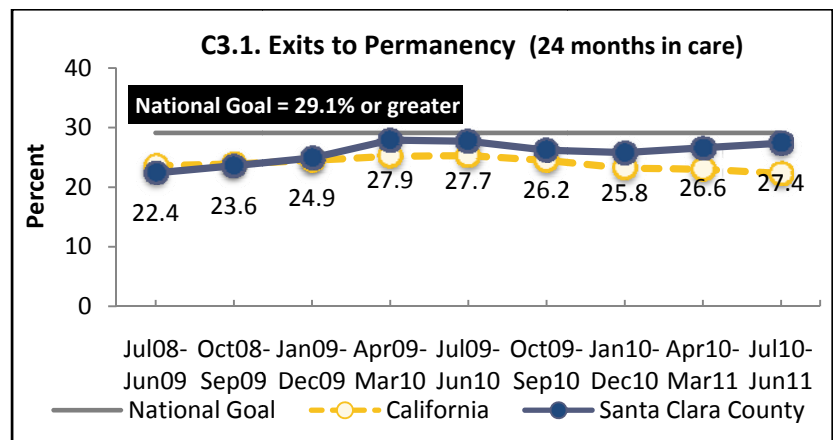


C2.5	National Standard	Last Year (Jul08- Jun09)		Current Period (Jul09- Jun10)	
		Rate	Goal met (✓) or not (✗)	Rate	Goal met (✓) or not (✗)
Ethnicity	Rate	Rate	Goal met (✓) or not (✗)	Rate	Goal met (✓) or not (✗)
Black	≥ 53.7%	50.0%	✗	54.5%	✓
White	≥ 53.7%	67.7%	✗	72.7%	✗
Hispanic	≥ 53.7%	42.0%	✗	55.6%	✗
Asian/ Pacific Islander	≥ 53.7%	71.4%	✗	100.0%	✗
Native American	≥ 53.7%	NA	NA	NA	NA
Total	≥ 53.7%	48.8%	✗	59.3%	✗

Permanency for Children in Long-term Care

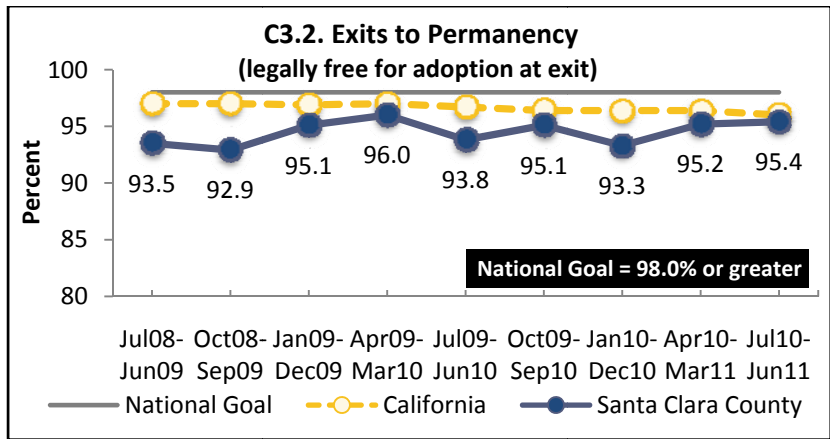


C3.1. Of all children in foster care for 24 months or longer on the first day of the year, what percent were discharged to a permanent home by the end of the year and prior to turning 18?



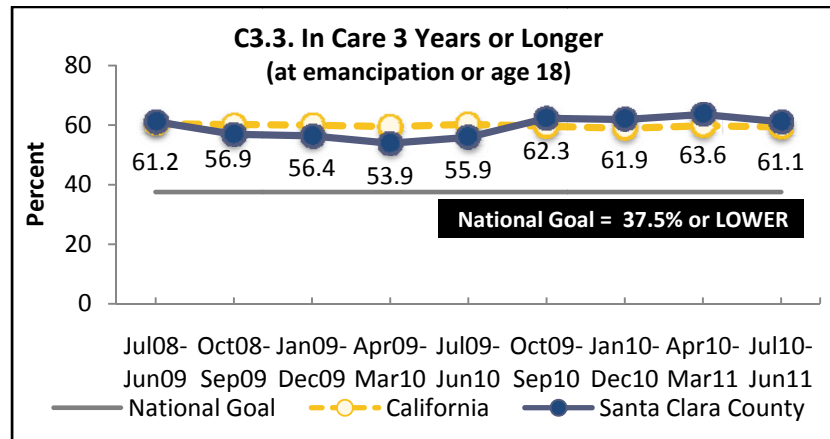
C3.1	National Standard	Last Year (Jul09- Jun10)		Current Period (Jul10- Jun11)	
		Rate	Goal met (✓) or not (✗)	Rate	Goal met (✓) or not (✗)
Black	≥ 29.1%	24.1%	✗	16.4%	✗
White	≥ 29.1%	27.3%	✗	18.6%	✗
Hispanic	≥ 29.1%	29.4%	✓	33.2%	✓
Asian/ Pacific Islander	≥ 29.1%	19.3%	✗	10.7%	✗
Native American	≥ 29.1%	0.0%	✗	14.3%	✗
Total	≥ 29.1%	27.7%	✗	27.4%	✗

C3.2. Of all children discharged from foster care during the year who were legally free for adoption, what percent were discharged to a permanent home prior to turning 18?



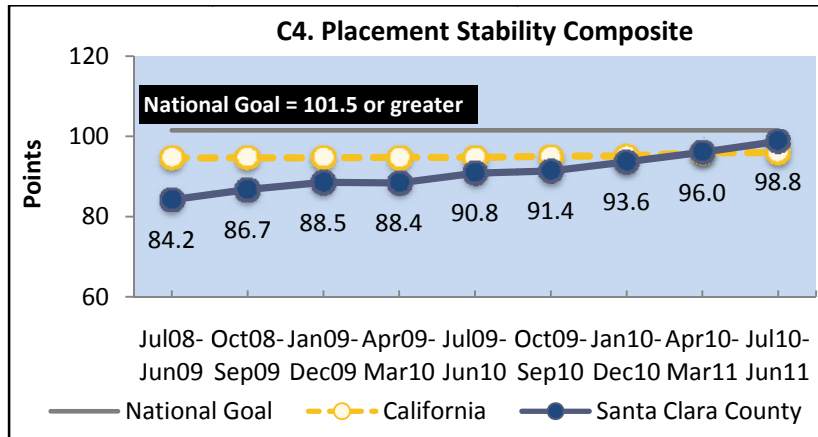
C3.2	National Standard	Last Year (Jul09- Jun10)		Current Period (Jul10- Jun11)	
		Rate	Goal met (✓) or not (✗)	Rate	Goal met (✓) or not (✗)
Ethnicity	Rate	Rate	Goal met (✓) or not (✗)	Rate	Goal met (✓) or not (✗)
Black	≥ 98.0%	87.0%	✗	100.0%	✓
White	≥ 98.0%	95.0%	✗	92.6%	✗
Hispanic	≥ 98.0%	94.3%	✗	96.0%	✗
Asian/ Pacific Islander	≥ 98.0%	100.0%	✓	80.0%	✗
Native American	≥ 98.0%	NA	NA	100.0%	✓
Total	≥ 98.0%	93.8%	✗	95.4%	✗

C3.3. Of all children in foster care during the year who were either discharged to emancipation or turned 18 while still in care, what percent had been in foster care for 3 years or longer?

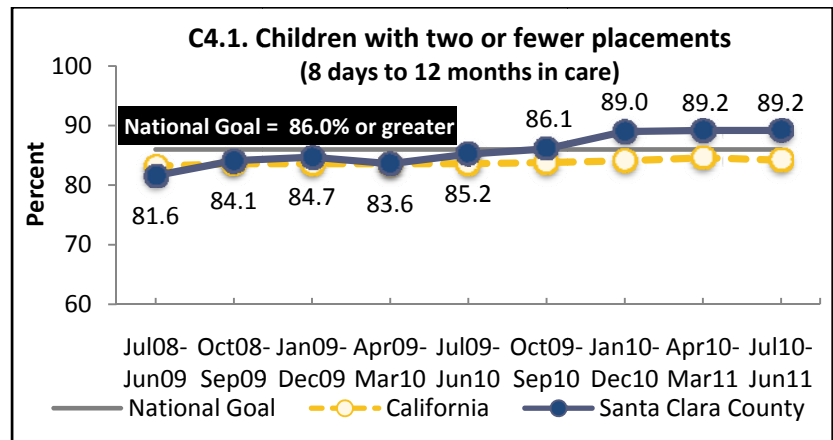


C3.3	National Standard	Last Year (Jul09- Jun10)		Current Period (Jul10- Jun11)	
		Rate	Goal met (✓) or not (✗)	Rate	Goal met (✓) or not (✗)
Ethnicity	Rate	Rate	Goal met (✓) or not (✗)	Rate	Goal met (✓) or not (✗)
Black	≤ 37.5%	43.5%	✗	50.0%	✗
White	≤ 37.5%	60.7%	✗	64.3%	✗
Hispanic	≤ 37.5%	60.9%	✗	64.9%	✗
Asian/ Pacific Islander	≤ 37.5%	14.3%	✓	40.0%	✗
Native American	≤ 37.5%	NA	NA	100.0%	✗
Total	≤ 37.5%	55.9%	✗	61.1%	✗

Placement Stability

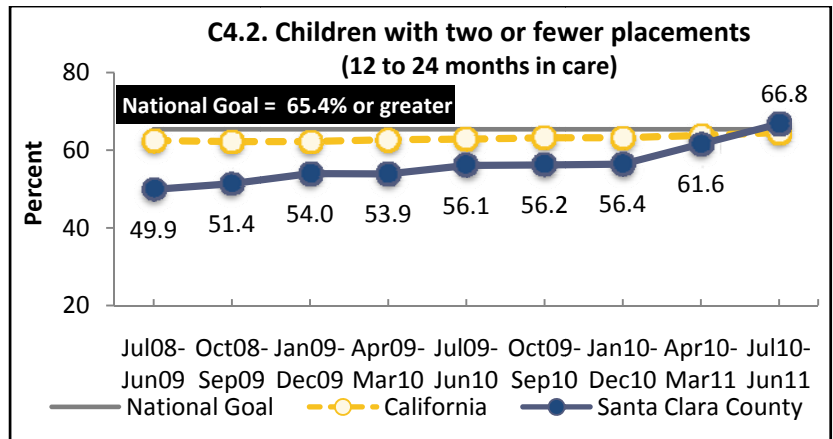


C4.1. Of all children served in foster care during a year who were in foster care for at least 8 days but less than 12 months, what percent had two or fewer placement settings?



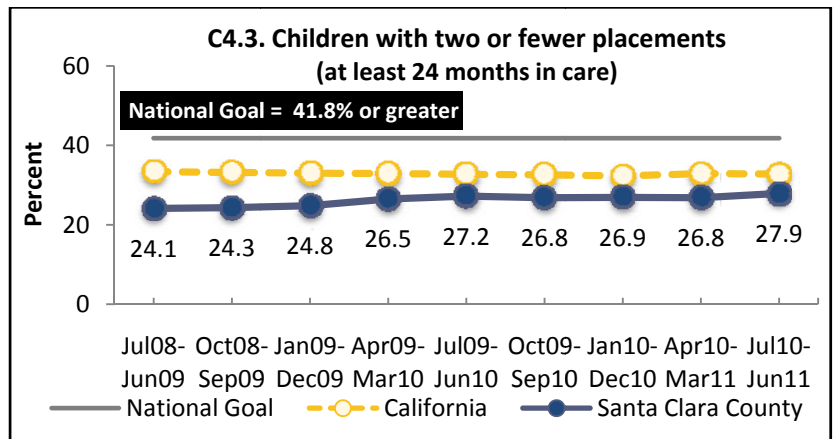
C4.1	National Standard	Last Year (Jul09- Jun10)		Current Period (Jul10- Jun11)	
		Rate	Goal met (✓) or not (✗)	Rate	Goal met (✓) or not (✗)
Black	≥ 86.0%	82.2%	✗	79.0%	✗
White	≥ 86.0%	87.6%	✓	90.1%	✓
Hispanic	≥ 86.0%	84.9%	✗	90.6%	✓
Asian/ Pacific Islander	≥ 86.0%	87.0%	✓	96.4%	✓
Native American	≥ 86.0%	66.7%	✗	75.0%	✗
Total	≥ 86.0%	85.2%	✗	89.2%	✓

C4.2. Of all children served in foster care during a year who were in foster care for at least 12 months but less than 24 months, what percent had two or fewer placement settings?



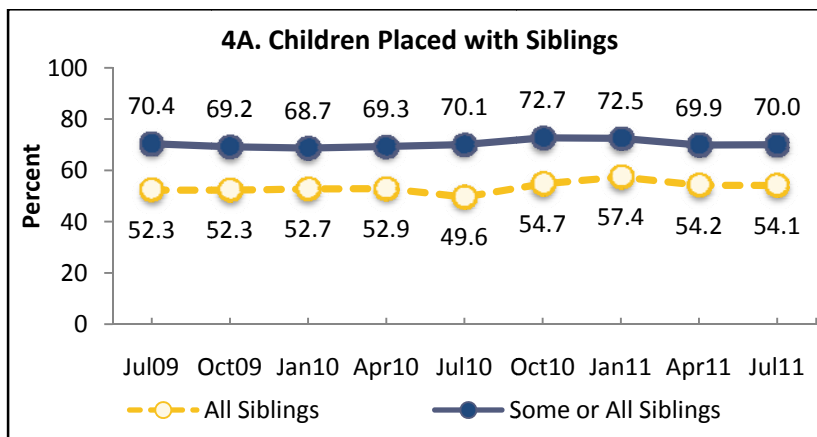
C4.2	National Standard	Last Year (Jul09- Jun10)		Current Period (Jul10- Jun11)	
		Rate	Goal met (✓) or not (✗)	Rate	Goal met (✓) or not (✗)
Ethnicity	Rate	Rate	Goal met (✓) or not (✗)	Rate	Goal met (✓) or not (✗)
Black	≥ 65.4%	37.5%	✗	54.2%	✗
White	≥ 65.4%	51.5%	✗	66.0%	✓
Hispanic	≥ 65.4%	59.9%	✗	68.3%	✓
Asian/ Pacific Islander	≥ 65.4%	78.9%	✓	70.0%	✓
Native American	≥ 65.4%	50.0%	✗	50.0%	✗
Total	≥ 65.4%	56.1%	✗	66.8%	✓

C4.3. Of all children served in foster care during a year who were in foster care for at least 24 months, what percent had two or fewer placement settings?



C4.3	National Standard	Last Year (Jul09- Jun10)		Current Period (Jul10- Jun11)	
		Rate	Goal met (✓) or not (✗)	Rate	Goal met (✓) or not (✗)
Ethnicity	Rate	Rate	Goal met (✓) or not (✗)	Rate	Goal met (✓) or not (✗)
Black	≥ 41.8%	22.0%	✗	23.9%	✗
White	≥ 41.8%	31.5%	✗	30.8%	✗
Hispanic	≥ 41.8%	26.9%	✗	28.2%	✗
Asian/ Pacific Islander	≥ 41.8%	31.0%	✗	27.3%	✗
Native American	≥ 41.8%	11.1%	✗	12.5%	✗
Total	≥ 41.8%	27.2%	✗	27.9%	✗

Child and Family Well-being

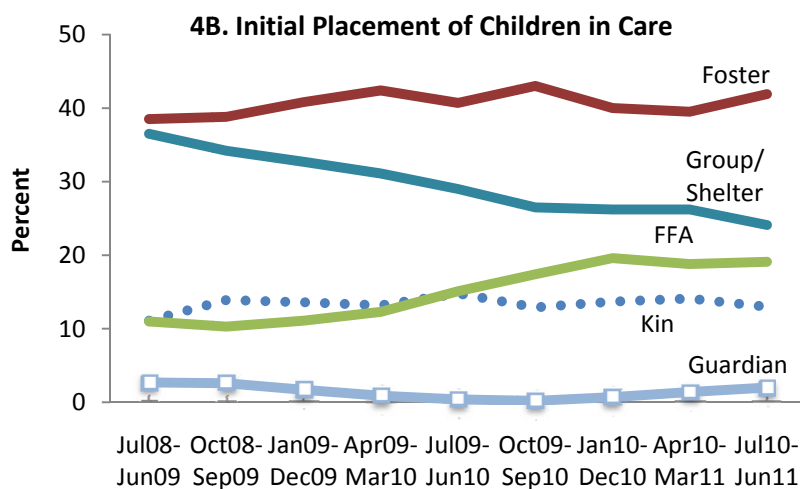


4A. Children Placed with Some or All Siblings, July 1, 2011

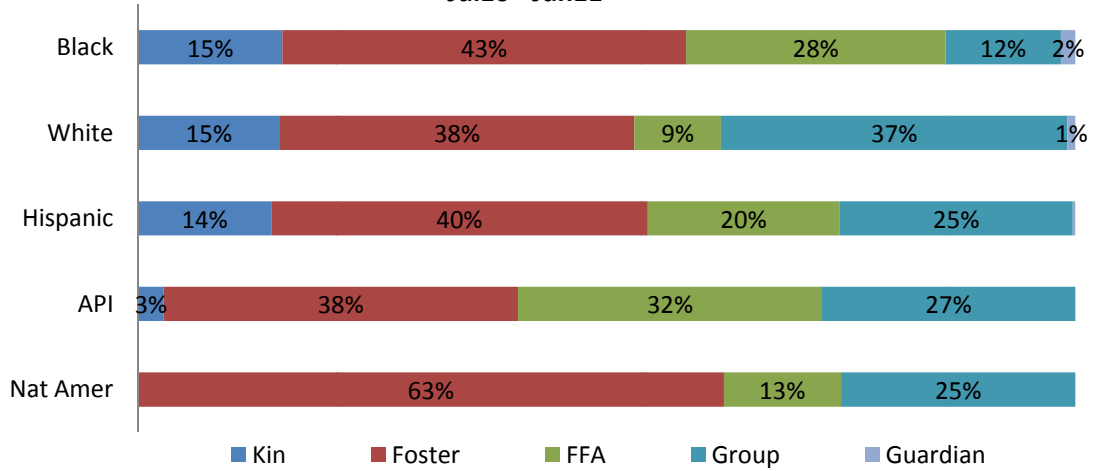
Ethnicity	All Siblings	Some or All Siblings
Black	57.3%	66.7%
White	51.2%	68.6%
Hispanic	54.2%	71.2%
Asian/ Pacific Islander	30.8%	53.8%
Native American	87.5%	87.5%
Total	54.1%	70.0%

4B. Initial Placement of Children in Care, Jul10- Jun11

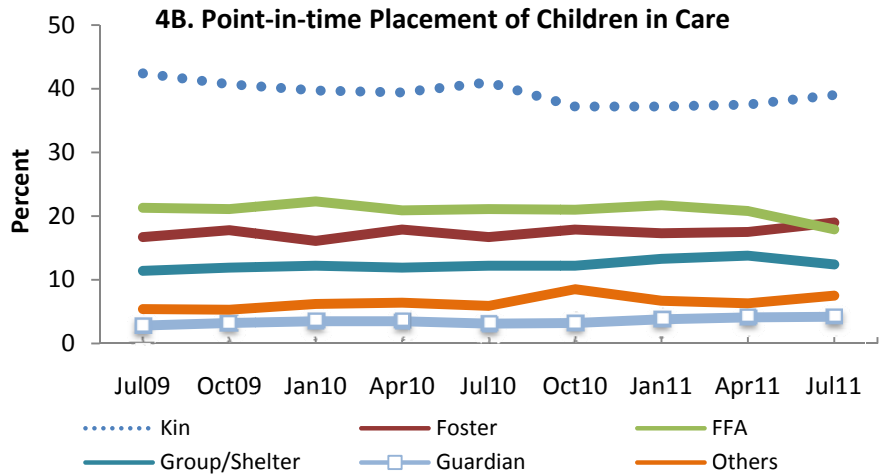
Placement Type	Rate
Kin	13.0%
Foster	41.9%
FFA	19.1%
Group/Shelter	24.1%
Guardian	2.0%



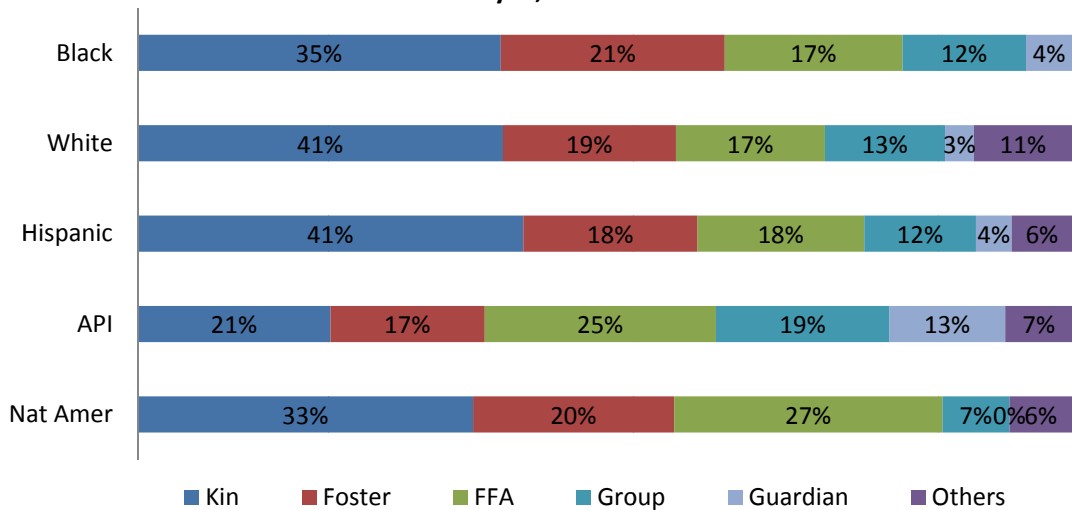
**4B. Initial Placement of Children in Care by Race/Ethnicity
Jul10 - Jun11**



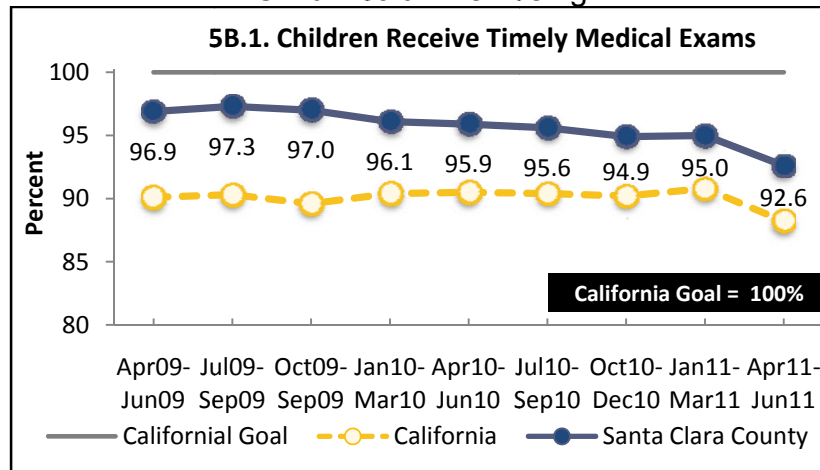
4B. Point-in-time Placement of Children in Care, July 1, 2011	
Placement Type	Rate
Kin	39.0%
Foster	19.0%
FFA	17.9%
Group	12.4%
Guardian	4.2%
Others	7.5%



**4B. Point-in-time Placement of Children by Race/Ethnicity
July 1, 2011**

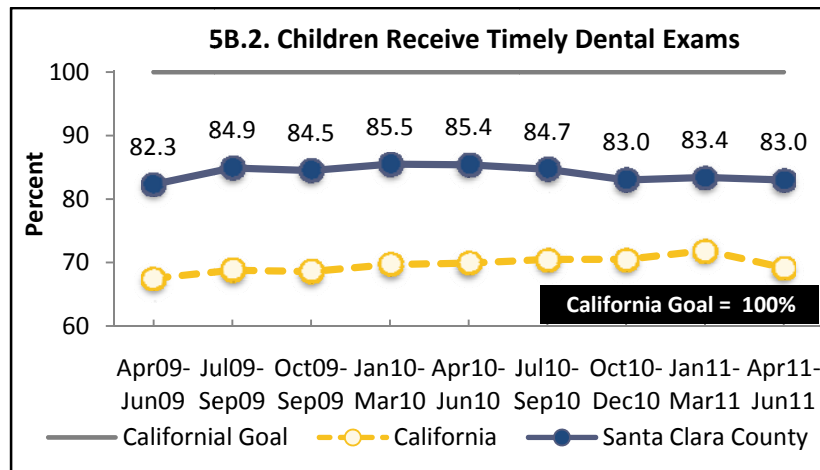


Child Health Well-being



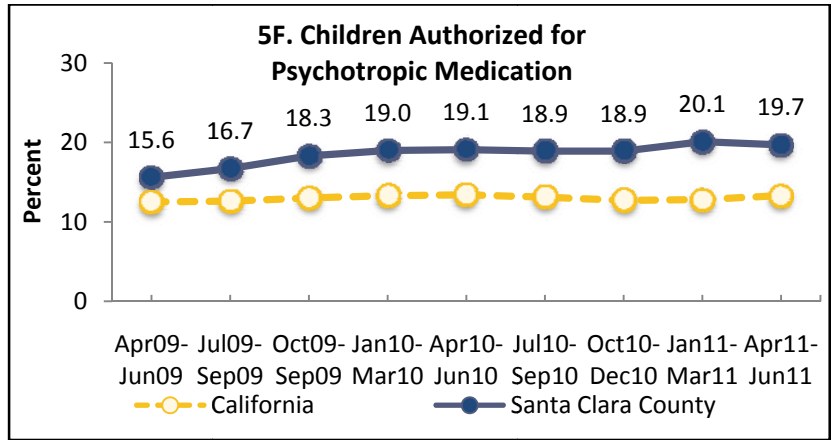
5B.1. Children Receive Timely Medical Exams, April 2011 - June 2011

Medical Exams	Black	White	Hispanic	Asian/ Pacific Islander	Native American	Total
Received a timely medical exam	88.8%	91.6%	93.4%	95.2%	92.3%	92.6%

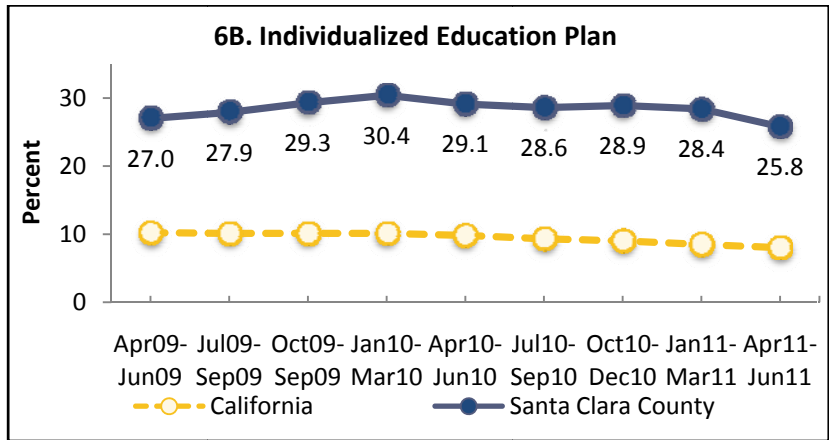


5B.2. Children Receive Timely Dental Exams, April 2011 - June 2011

Dental Exams	Black	White	Hispanic	Asian/ Pacific Islander	Native American	Total
Received a timely dental exam	69.9%	85.9%	84.5%	92.1%	72.7%	83.0%



5F. Children Authorized for Psychotropic Medication, April 2011 - June 2011						
Psychotropic Medication	Black	White	Hispanic	Asian/Pacific Islander	Native American	Total
Authorized for psychotropic medications	21.3%	26.1%	17.3%	21.6%	25.0%	19.7%



6B. Individualized Education Plan, April 2011 - June 2011						
Individualized Education Plan	Black	White	Hispanic	Asian/Pacific Islander	Native American	Total
Have had an IEP	34.6%	27.3%	23.4%	23.9%	42.9%	25.8%